

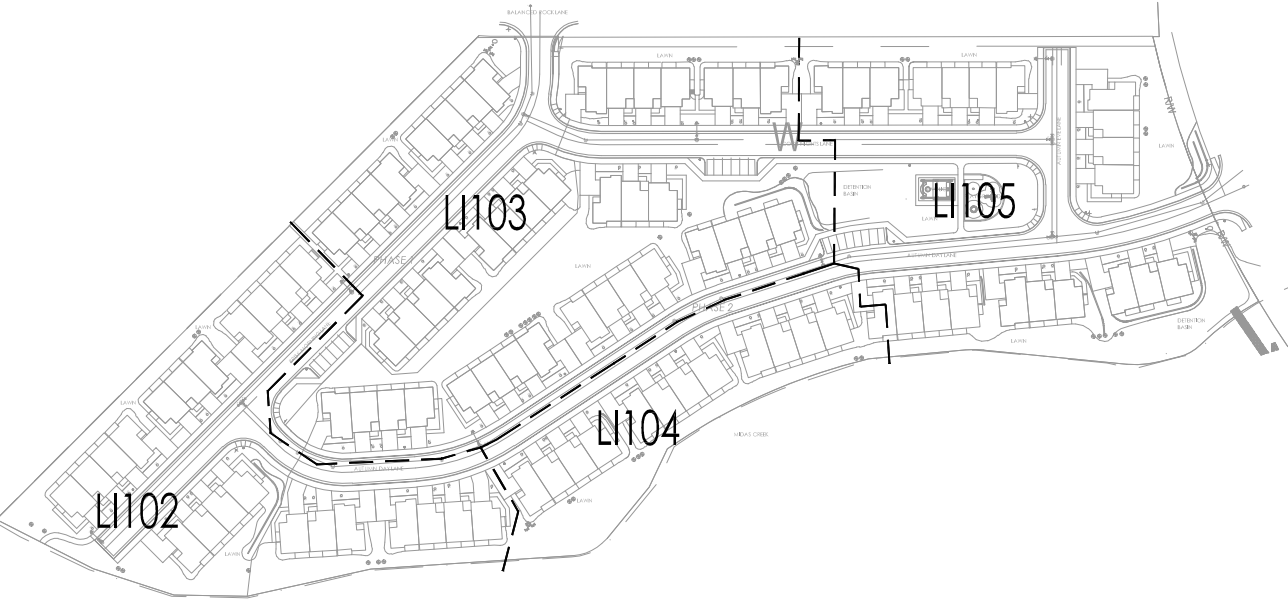
GENERAL IRRIGATION NOTES

- WORK SHALL CONFORM WITH CITY STANDARDS AND SPECIFICATIONS UNLESS OTHERWISE NOTED IN THE PLANS.
- THE CONTRACTOR SHALL BE RESPONSIBLE FOR ENSURING PROPER COVERAGE OF ALL IRRIGATED AREAS.
- THE DISTRIBUTION UNIFORMITY OF THIS IRRIGATION SYSTEM IS AS FOLLOWS:
 --- 60% DU FOR FIXED SPRAY SYSTEM
 --- 70% DU FOR ROTOR SYSTEMS OVERALL EFFICIENCY OF SYSTEM SHALL BE 80%
- NO MAJOR REVISIONS IN THE DESIGN WILL BE ALLOWED WITHOUT WRITTEN APPROVAL FROM THE ARCHITECT & OWNER.
- IT IS THE RESPONSIBILITY OF THE IRRIGATION CONTRACTOR TO FAMILIARIZE THEMSELVES WITH ALL GRADES, LOCATION OF WALKS, STRUCTURES AND UTILITIES. THE CONTRACTOR SHALL REPAIR OR REPLACE ALL ITEMS DAMAGED BY HIS WORK. HE SHALL COORDINATE HIS WORK WITH OTHER CONTRACTORS FOR THE LOCATION AND INSTALLATION OF PIPE SLEEVES AND LATERAL LINES THROUGH WALLS, AND UNDER ROADWAYS AND PAVED AREAS. SLEEVES INSTALLED AT IMPROPER DEPTHS WILL HAVE TO BE RE-INSTALLED BY BORING METHODS.
- DO NOT WILLFULLY INSTALL THE IRRIGATION AS SHOWN ON THE PLAN WHEN IT IS OBVIOUS IN THE FIELD THAT UNKNOWN OBSTRUCTIONS, DIFFERENCES IN GRADE AND AREA DIMENSIONS EXIST THAT MIGHT NOT HAVE BEEN CONSIDERED DURING THE INITIAL DESIGN PHASE. SUCH OBSTRUCTIONS OR DIFFERENCES SHOULD BE BROUGHT TO THE ATTENTION OF THE OWNER'S REPRESENTATIVE. IN THE EVENT THIS NOTIFICATION IS NOT PERFORMED, THE CONTRACTOR SHALL ASSUME FULL RESPONSIBILITY FOR ANY REVISIONS OR CHANGE ORDERS.
- 120V AC ELECTRICAL POWER SOURCE AT THE CONTROLLER LOCATION SHALL BE PROVIDED BY OTHERS. THE IRRIGATION CONTRACTOR SHALL MAKE THE FINAL CONNECTION FROM THE ELECTRICAL SOURCE TO THE CONTROLLER. REFER TO THE SPECIFICATIONS FOR THE EXACT ELECTRICAL REQUIREMENTS.
- THE IRRIGATION CONTRACTOR SHALL ADJUST VALVES, FLUSH AND ADJUST IRRIGATION HEADS FOR OPTIMUM COVERAGE WITH MINIMAL OVERSPRAY ONTO WALKS, STREETS AND WALLS.
- THE OWNER RESERVES THE RIGHT TO REFUSE MATERIAL OR WORK WHICH DOES NOT CONFORM TO THESE DRAWINGS AND SPECIFICATIONS. REJECTED WORK SHALL BE REMOVED OR CORRECTED AS SOON AS POSSIBLE AT CONTRACTOR'S EXPENSE.
- GUARANTEE: ALL WORK SHALL BE GUARANTEED (FOR ONE YEAR FROM DATE OF ACCEPTANCE) AGAINST ALL DEFECTS IN MATERIAL, EQUIPMENT AND WORKMANSHIP. GUARANTEE SHALL ALSO COVER REPAIR FOR DAMAGE TO ANY PART OF THE PREMISES RESULTING FROM LEAKS OR OTHER DEFECTS IN MATERIAL, EQUIPMENT OR WORKMANSHIP. TO THE SATISFACTION OF THE OWNER. REPAIRS, IF REQUIRED, SHALL BE DONE PROMPTLY AND AT NO COST TO THE OWNER.
- INSTALL CONTROLLERS AS NOTED. IRRIGATION CONTRACTOR IS RESPONSIBLE FOR INSTALLING CONDUITS AND WIRING FROM VALVES TO CONTROLLERS.
- THIS SPRINKLER PLAN IS DRAWN FOR GRAPHIC CLARITY WHERE PIPING, VALVES AND WIRING ARE SHOWN IN CONC. AND GRAPHIC AREAS. EXCEPT WHERE CROSSING, THE INTENT IS FOR THE PIPING, VALVES AND WIRE TO BE PLACED IN THE ADJACENT PLANTING AREAS.
- REFER TO PLANTING PLAN FOR COORDINATION WITH TREE PLANTING LOCATIONS.
- IT IS RECOMMENDED THAT IRRIGATION ZONES WITH OVERHEAD SPRAY OR STREAM SPRINKLERS SHALL BE DESIGNED TO OPERATE BETWEEN 6:00 PM AND 10:00 AM TO REDUCE WATER LOSE FROM WIND AND EVAPORATION. THIS WOULD EXCLUDE DRIP OR BUBBLER ZONES.
- CHECK VALVES TO BE SPECIFIED WHERE LOW-HEAD DRAINAGE WILL OCCUR DUE TO ELEVATION DIFFERENCES. PRESSURE COMPENSATING VALVES AND SPRINKLERS SHALL BE REQUIRED WHERE A SIGNIFICANT VARIATION IN WATER PRESSURE WILL OCCUR WITHIN THE IRRIGATION SYSTEM DUE TO THE LIMITED NUMBER OF TREES.
- SPRINKLERS TO HAVE MATCHED PRECIPITATION RATE WITHIN EACH VALVE.
- FILTERS AND END FLUSH VALVES SHALL BE PROVIDED AS NECESSARY.
- EACH VALVE TO IRRIGATE AREA WITH SIMILAR SITE SLOPE, SOIL CONDITIONS AND PLANTS WITH SIMILAR WATER NEEDS. TURF AND NON-TURF AREAS IRRIGATED ON SEPARATE VALVES.
- ON SLOPES OVER 30 PERCENT, IRRIGATION SYSTEM SHALL CONSIST OF DRIP EMITTERS, BUBBLERS OR SPRINKLERS WITH A MAXIMUM PRECIPITATION RATE OF 0.85 INCHES PER HOUR AND ADJUSTED SPRINKLER CYCLE TIMES TO ELIMINATE RUNOFF.
- AN AUTOMATIC CONTROLLER IS TO BE PROVIDED WITH MULTIPLE PROGRAM AND REPEAT CYCLE CAPABILITIES. AUTOMATIC RAIN SHUT-OFF DEVICE AND A FLEXIBLE CALENDAR PROGRAM.
- A PRESSURE REGULATOR IS TO BE PROVIDED WHERE WATER PRESSURE EXCEEDS MANUFACTURERS MAXIMUM RECOMMENDED OPERATING PRESSURE FOR THE SPRINKLER HEADS OR WHERE SIGNIFICANT VARIATION IN WATER PRESSURE WILL OCCUR.
- LANDSCAPE WATER METER AND BACKFLOW PREVENTION ASSEMBLY THAT ARE IN COMPLIANCE WITH STATE CODE SHALL BE INSTALLED SEPARATE FROM THE WATER METER INSTALLED FOR INDOOR USE. THE SIZE OF THE METER SHALL BE DETERMINED BASED ON THE IRRIGATION DEMAND. THIS METER MUST BE INSTALLED AFTER THE MAIN METER AND SHALL REMAIN WITHIN THE CITY EASEMENT. THE DEVELOPER SHALL SUPPLY THE LANDSCAPE METER AND MATERIALS.

SITE LEGEND

- PROPERTY LINE
- - - - - EXISTING CONTOURS
- PROPOSED CONTOUR
- 52 PROPOSED SPOT ELEVATION
- PROPOSED RETAINING WALL
- SETBACK LINE
- EXISTING TREE - TO REMAIN

KEY PLAN



CRITICAL ANALYSIS

Generated: 2017-04-05 12:36

P.O.C. NUMBER: 01
Water Source Information:

FLOW AVAILABLE	
Water Meter Size:	1-1/2"
Flow Available:	56.55 gpm

PRESSURE AVAILABLE	
Static Pressure at POC:	100.00 psi
Elevation Change:	5.00 ft
Service Line Size:	1 1/2"
Length of Service Line:	50.00 ft
Pressure Available:	95.00 psi

DESIGN ANALYSIS	
Maximum Station Flow:	51.52 gpm
Flow Available at POC:	56.55 gpm
Residual Flow Available:	5.03 gpm

Critical Station:	109
Design Pressure:	45.00 psi
Friction Loss:	5.65 psi
Fittings Loss:	0.56 psi
Elevation Loss:	0.00 psi
Loss through Valve:	3.63 psi
Pressure Req. at Critical Station:	54.83 psi
Loss for Fittings:	2.11 psi
Loss for Main Line:	21.10 psi
Loss for POC to Valve Elevation:	-1.30 psi
Loss for Backflow:	6.51 psi
Loss for Master Valve:	3.36 psi
Loss for Water Meter:	5.00 psi
Critical Station Pressure at POC:	91.61 psi
Pressure Available:	95.00 psi
Residual Pressure Available:	3.39 psi

CRITICAL ANALYSIS

Generated: 2017-04-05 12:36

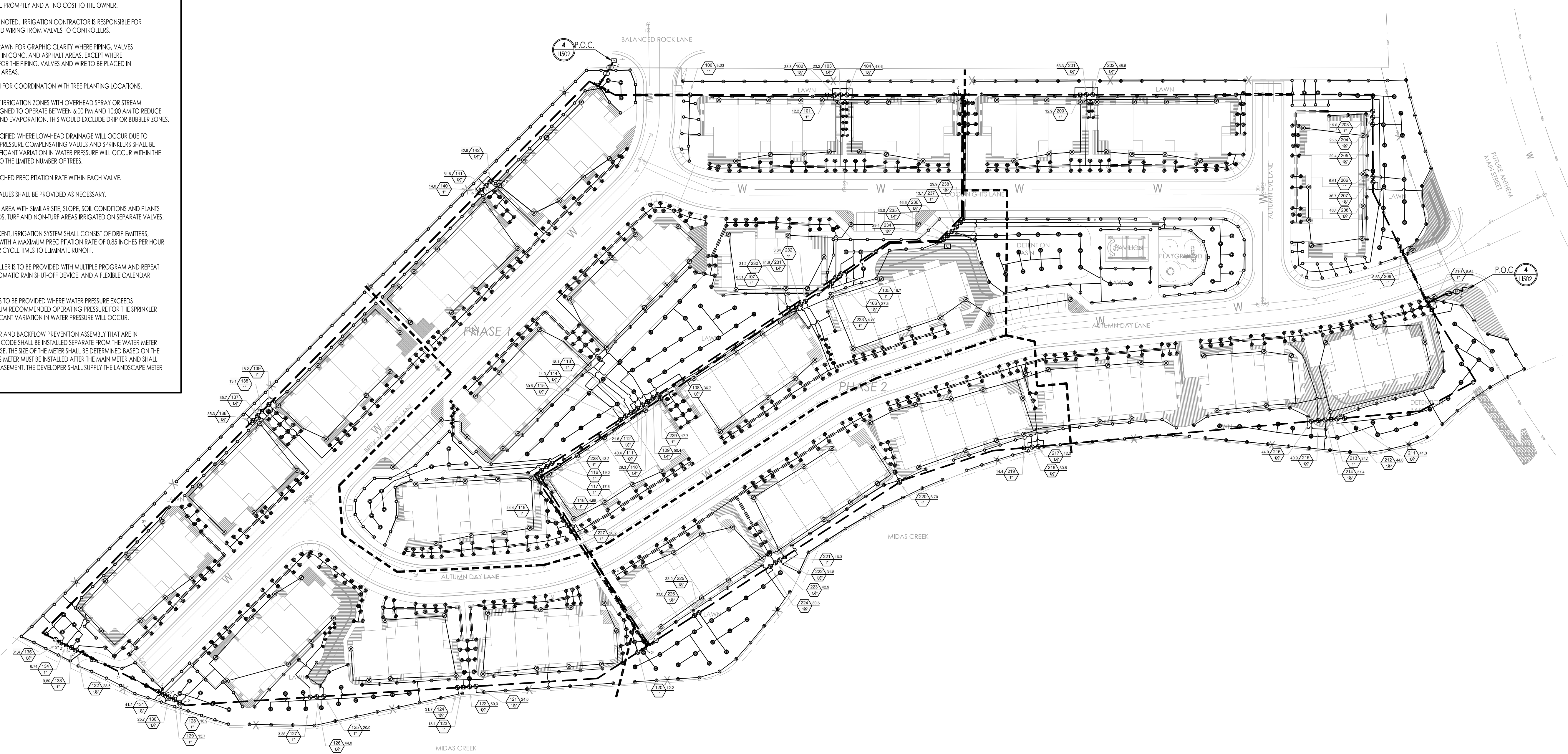
P.O.C. NUMBER: 02
Water Source Information:

FLOW AVAILABLE	
Water Meter Size:	1-1/2"
Flow Available:	56.55 gpm

PRESSURE AVAILABLE	
Static Pressure at POC:	100.00 psi
Elevation Change:	5.00 ft
Service Line Size:	1 1/2"
Length of Service Line:	50.00 ft
Pressure Available:	95.00 psi

DESIGN ANALYSIS	
Maximum Station Flow:	53.30 gpm
Flow Available at POC:	56.55 gpm
Residual Flow Available:	3.25 gpm

Critical Station:	236
Design Pressure:	45.00 psi
Friction Loss:	4.84 psi
Fittings Loss:	0.48 psi
Elevation Loss:	0.00 psi
Loss through Valve:	3.57 psi
Pressure Req. at Critical Station:	53.89 psi
Loss for Fittings:	0.42 psi
Loss for Main Line:	4.21 psi
Loss for POC to Valve Elevation:	5.20 psi
Loss for Backflow:	6.50 psi
Loss for Master Valve:	2.86 psi
Loss for Water Meter:	4.32 psi
Critical Station Pressure at POC:	77.40 psi
Pressure Available:	95.00 psi
Residual Pressure Available:	17.60 psi



15151 South 900 East, Suite 200
 Salt Lake City, UT 84117
 Ph: 801.269.0055
 Fax: 801.269.1425
 www.thinkakc.com

The designs shown and described herein including all technical drawings, graphic representation & models thereof, are proprietary & can not be copied, duplicated or commercially exploited in whole or in part without the sale and express written permission from ASW+SA Architects, Inc.

These drawings are available for limited review and evaluation by clients, consultants, contractors, government agencies, vendors and office personnel only in accordance with this notice.



AUTUMN SKY TOWNHOMES

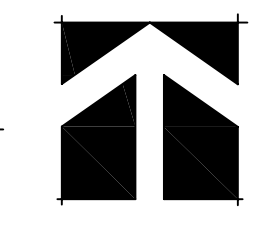
HERRIMAN, UTAH

PROJECT NO. 16074
 DATE: DEC 14, 2016
 REVISIONS:

SHEET TITLE:
IRRIGATION PLAN

SHEET NUMBER:
LI101

IRRIGATION PLAN
 SCALE 1" = 50'-0" (24" x 36")
 SCALE 1" = 100'-0" (12" x 18")





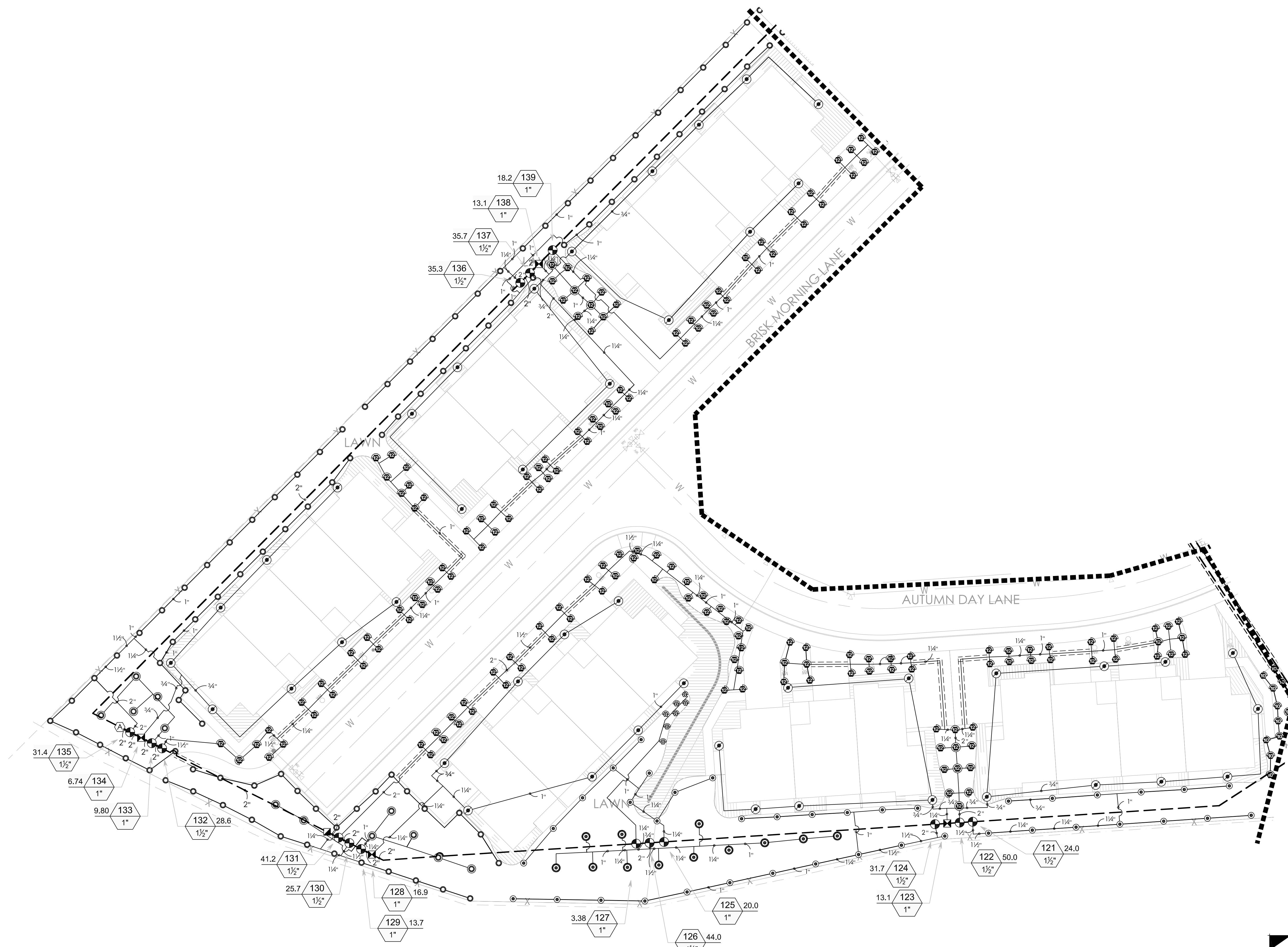
Think
Architecture

Architecture
Interior Design
Landscape Architecture
Land Planning
Construction Management

5151 South 900 East, Suite 200
Salt Lake City, UT 84117
Ph: 801.269.0055
Fax: 801.269.1425
www.thinkaec.com

The designs shown and described herein including all technical drawings, graphic representation & models thereof, are proprietary & can not be copied, duplicated, or commercially exploited in whole or in part without the sole and express written permission from ASWN+SA Architects, Inc.

These drawings are available for limited review and evaluation by clients, consultants, contractors, government agencies, vendors and office personnel only in accordance with this notice.



AUTUMN SKY TOWNHOMES

HERRIMAN, UTAH

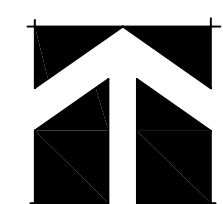
PROJECT NO. 16074
DATE: DEC 14, 2016
REVISIONS:

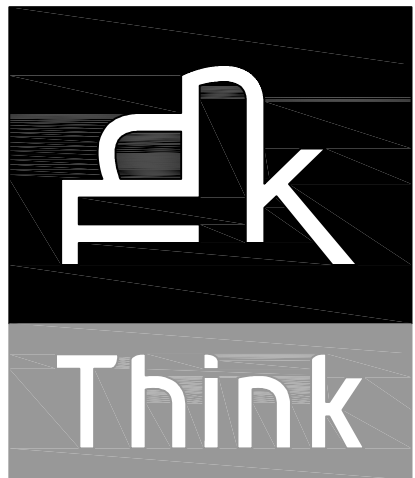
SHEET TITLE:
IRRIGATION PLAN

SHEET NUMBER:
LI102

(A) IRRIGATION PLAN

SCALE 1" = 20'-0" (24' x 36")
SCALE 1" = 40'-0" (12' x 18")





Think
Architecture

Architecture
Interior Design
Landscape Architecture
Land Planning
Construction Management

5151 South 900 East, Suite 200
Salt Lake City, UT 84117
Ph: 801.269.0055
Fax: 801.269.1425
www.thinkaoc.com

The designs shown and described herein including all technical drawings, graphic representation & models (if used), are proprietary & can not be copied, duplicated, or commercially exploited in whole or in part without the sale and express written permission from ASWN+SA Architects, Inc.

These drawings are available for limited review and evaluation by clients, consultants, contractors, government agencies, vendors and office personnel only in accordance with this notice.



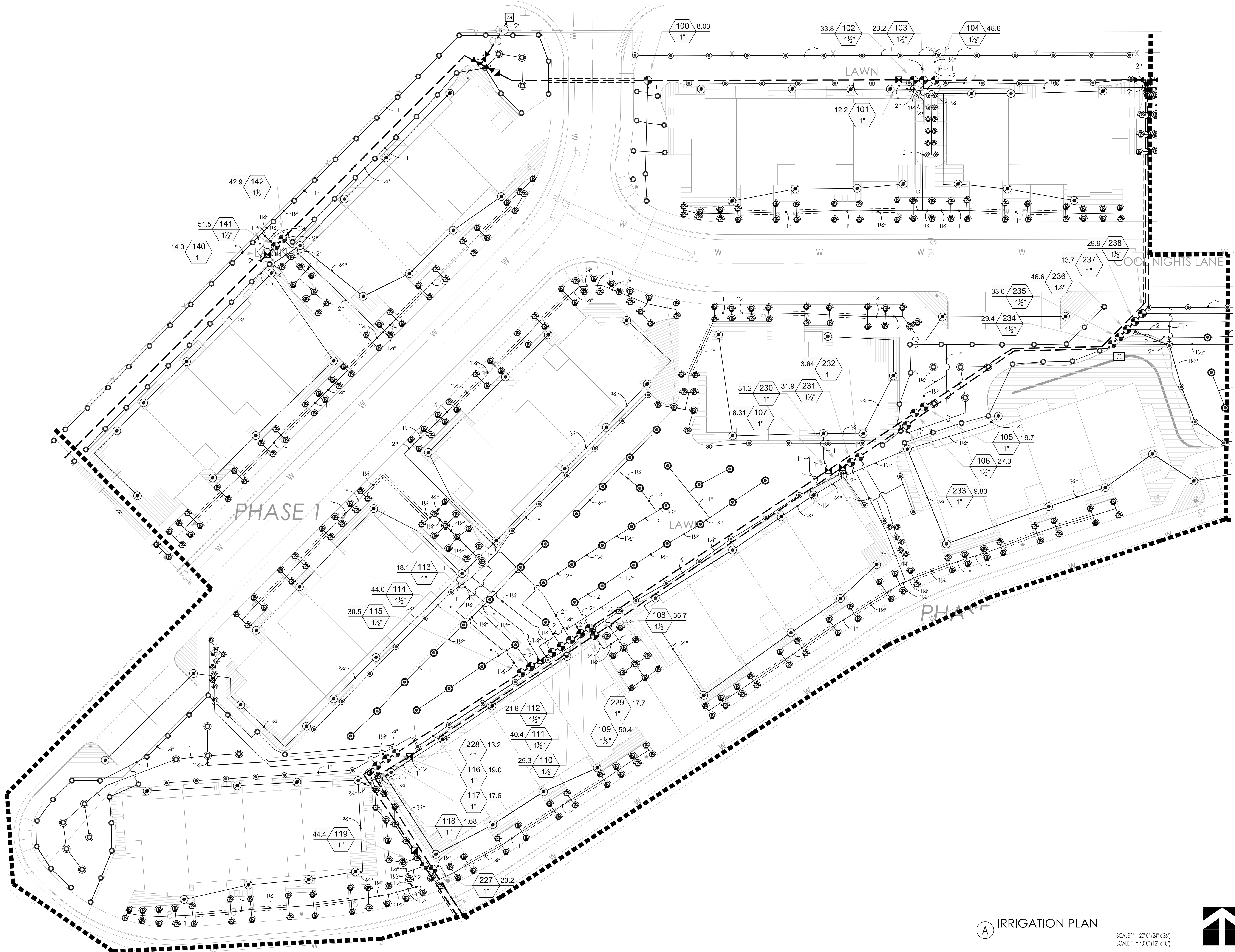
AUTUMN SKY TOWNHOMES

HERRIMAN, UTAH

PROJECT NO. 16074
DATE: DEC 14, 2016
REVISIONS:

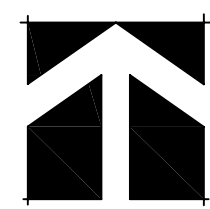
SHEET TITLE:
IRRIGATION PLAN

SHEET NUMBER:
LI103



(A) IRRIGATION PLAN

SCALE 1" = 20'-0" (24" x 36")
SCALE 1" = 40'-0" (12" x 18")





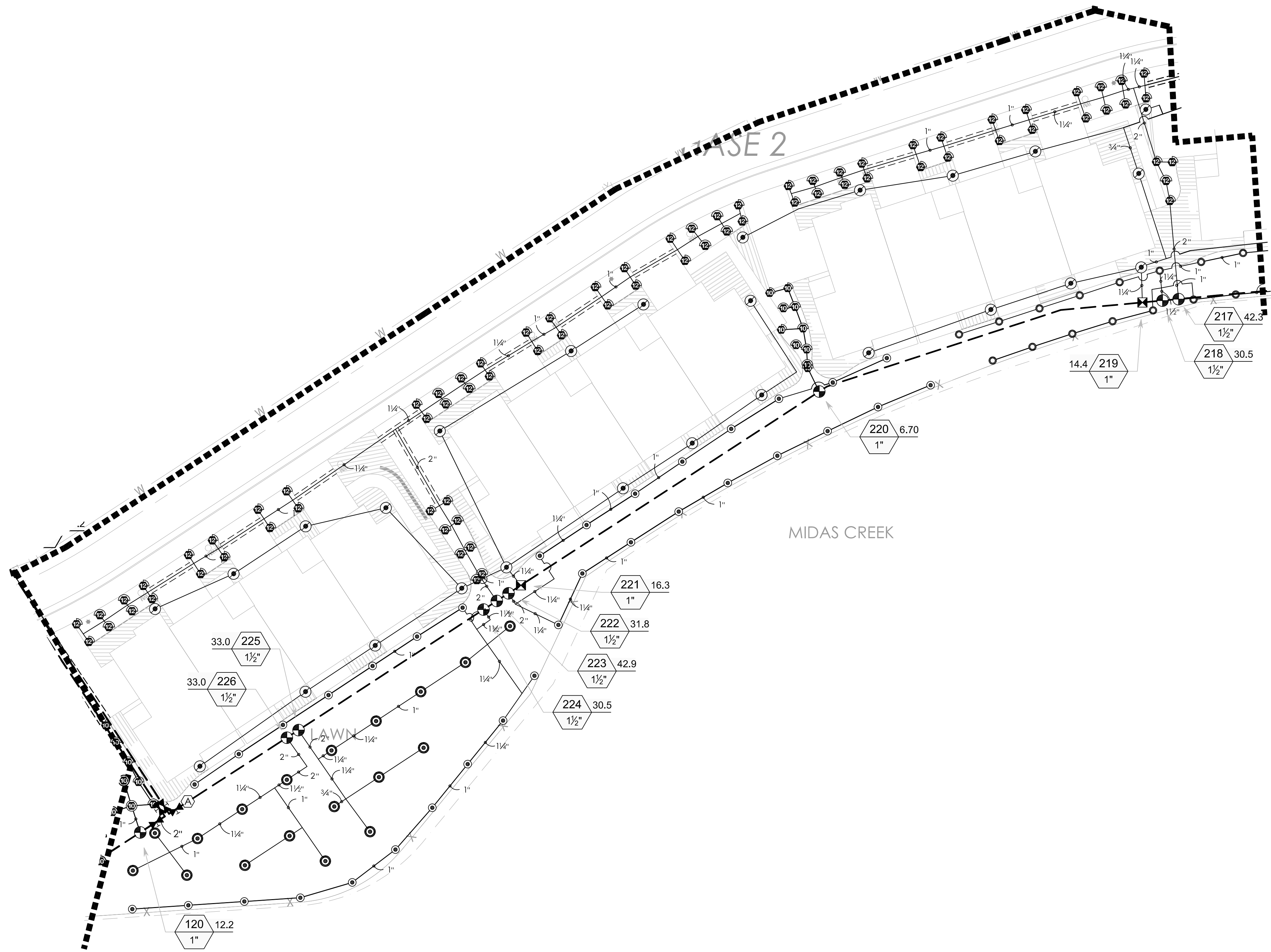
Think
Architecture

Architecture
Interior Design
Landscape Architecture
Land Planning
Construction Management

5151 South 900 East, Suite 200
Salt Lake City, UT 84117
Ph: 801.269.0055
Fax: 801.269.1425
www.thinkaec.com

The designs shown and described herein including all technical drawings, graphic representation & models thereof, are proprietary & can not be copied, duplicated, or commercially exploited in whole or in part without the sole and express written permission from ASWN+JA Architects, Inc.

These drawings are available for limited review and evaluation by clients, consultants, contractors, government agencies, vendors and office personnel only in accordance with this notice.



AUTUMN SKY TOWNHOMES

HERRIMAN, UTAH

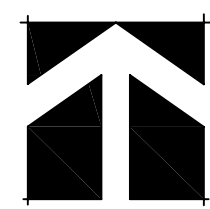
PROJECT NO. 16074
DATE: DEC 14, 2016
REVISIONS:

SHEET TITLE:
IRRIGATION PLAN

SHEET NUMBER:
LI104

A IRRIGATION PLAN

SCALE 1" = 20'-0" (24" x 36")
SCALE 1" = 40'-0" (12" x 18")





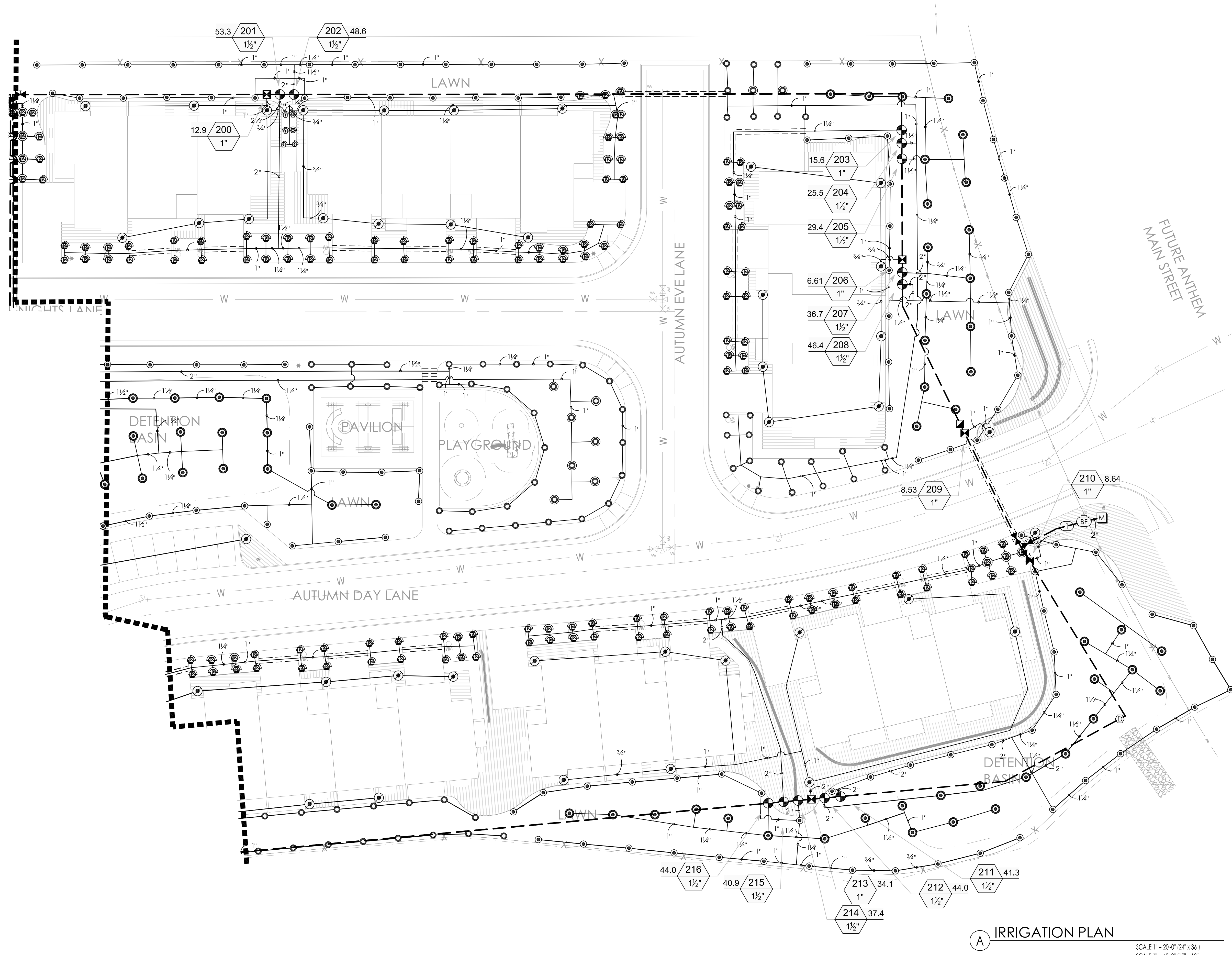
Think
Architecture

Architecture
Interior Design
Landscape Architecture
Land Planning
Construction Management

5151 South 900 East, Suite 200
Salt Lake City, UT 84117
Ph: 801.269.0055
Fax: 801.269.1425
www.thinkaoc.com

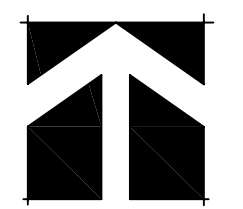
The designs shown and described herein including all technical drawings, graphic representation & models (herein) are proprietary & can not be copied, duplicated, or commercially exploited in whole or in part without the sole and express written permission from ASWN+SA Architects, Inc.

These drawings are available for limited review and evaluation by clients, consultants, contractors, government agencies, vendors and office personnel only in accordance with this notice.



(A) IRRIGATION PLAN

SCALE 1" = 20'-0" (24" x 36")
SCALE 1" = 40'-0" (12" x 18")



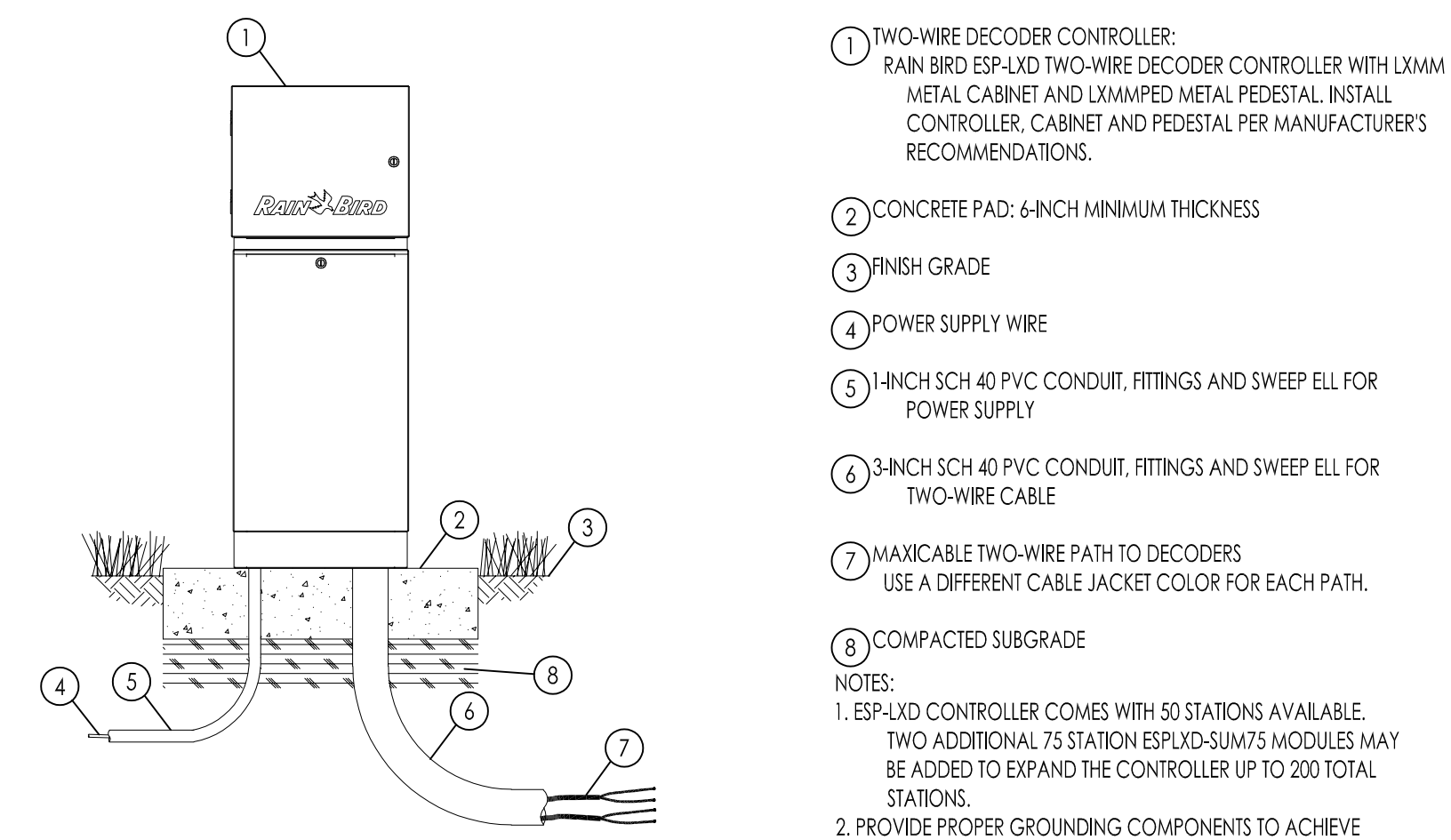
AUTUMN SKY TOWNHOMES

HERRIMAN, UTAH

PROJECT NO. 16074
DATE: DEC 14, 2016
REVISIONS:

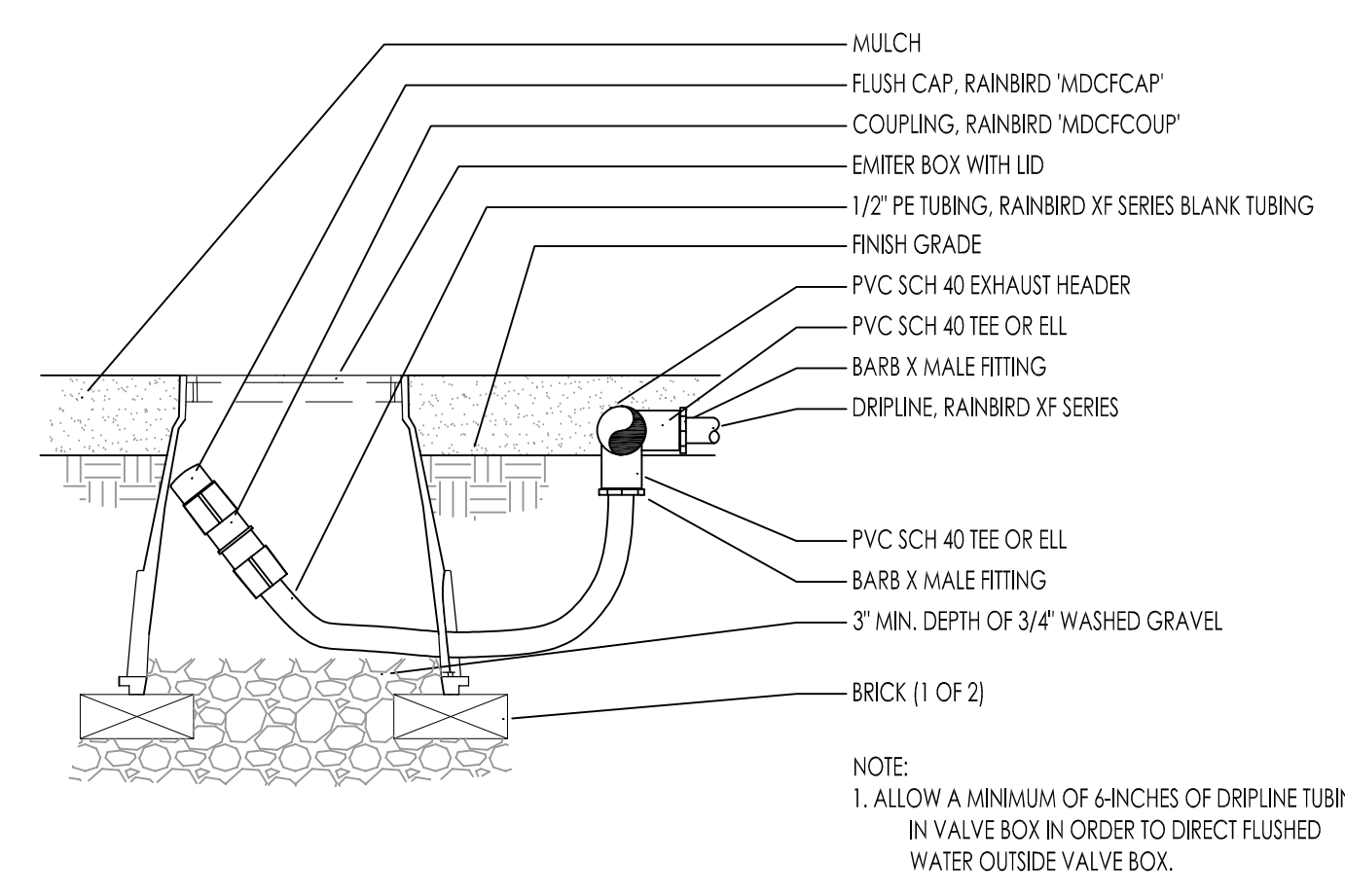
SHEET TITLE:
IRRIGATION PLAN

SHEET NUMBER:
LI105



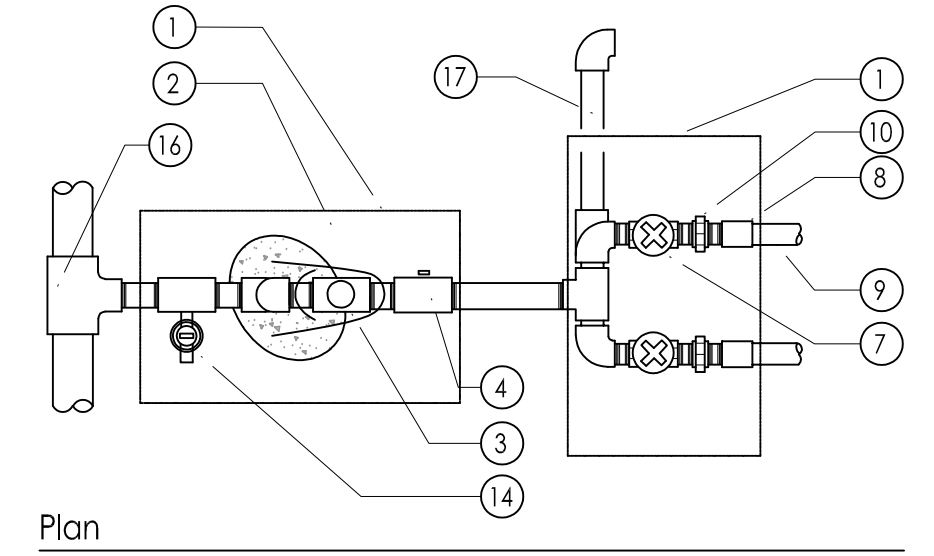
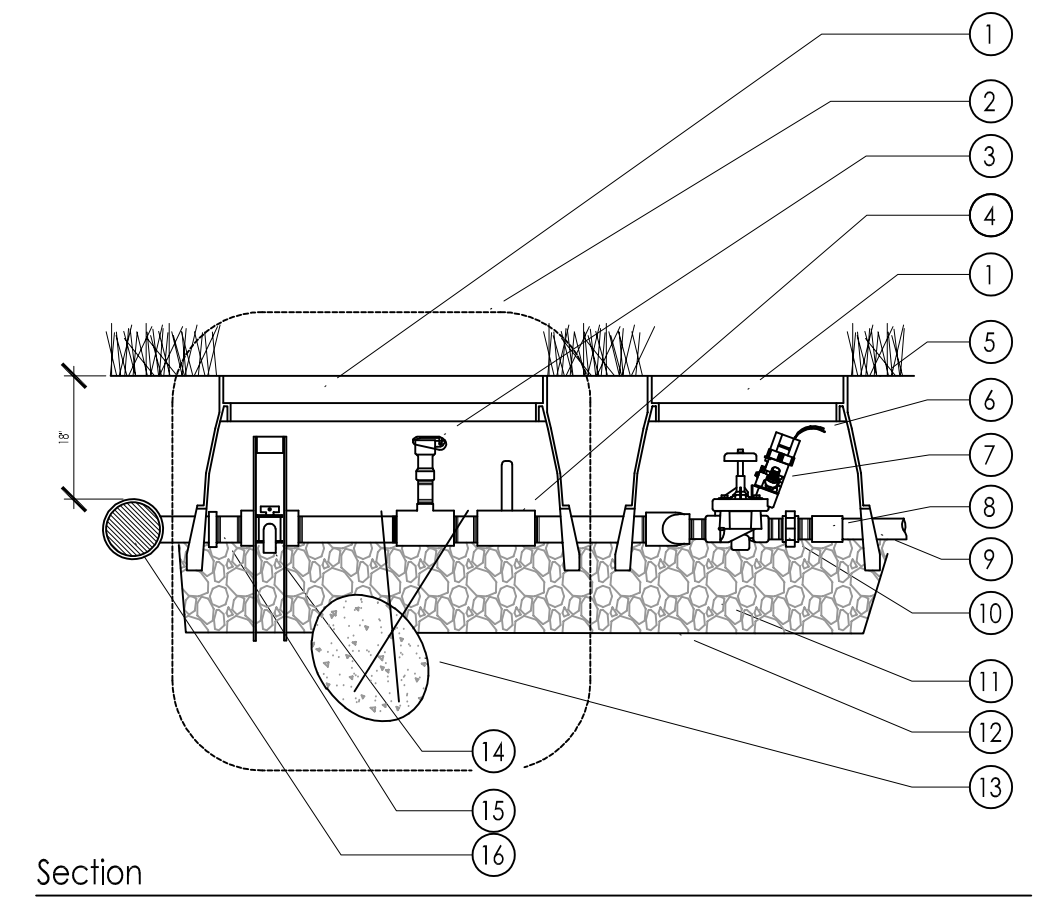
ESP-LXD TWO-WIRE DECODER CONTROLLER IN METAL PEDESTAL 1

- 1 TWO-WIRE DECODER CONTROLLER: RAIN BIRD ESP-LXD TWO-WIRE DECODER CONTROLLER WITH LXMM METAL CABINET AND LXMMED METAL PEDESTAL. INSTALL CONTROLLER, CABINET AND PEDESTAL PER MANUFACTURER'S RECOMMENDATIONS.
 - 2 CONCRETE PAD: 6-INCH MINIMUM THICKNESS
 - 3 FINISH GRADE
 - 4 POWER SUPPLY WIRE
 - 5 1-INCH SCH 40 PVC CONDUIT, FITTINGS AND SWEEP ELL FOR POWER SUPPLY
 - 6 3-INCH SCH 40 PVC CONDUIT, FITTINGS AND SWEEP ELL FOR TWO-WIRE CABLE
 - 7 MAXICABLE TWO-WIRE PATH TO DECODERS USE A DIFFERENT CABLE JACKET COLOR FOR EACH PATH.
 - 8 COMPACTED SUBGRADE
- NOTES:
 1. ESP-LXD CONTROLLER COMES WITH 50 STATIONS AVAILABLE. TWO ADDITIONAL 75 STATION ESPLXD-SUM75 MODULES MAY BE ADDED TO EXPAND THE CONTROLLER UP TO 200 TOTAL STATIONS.
 2. PROVIDE PROPER GROUNDING COMPONENTS TO ACHIEVE GROUND RESISTANCE OF 10 OHMS OR LESS.

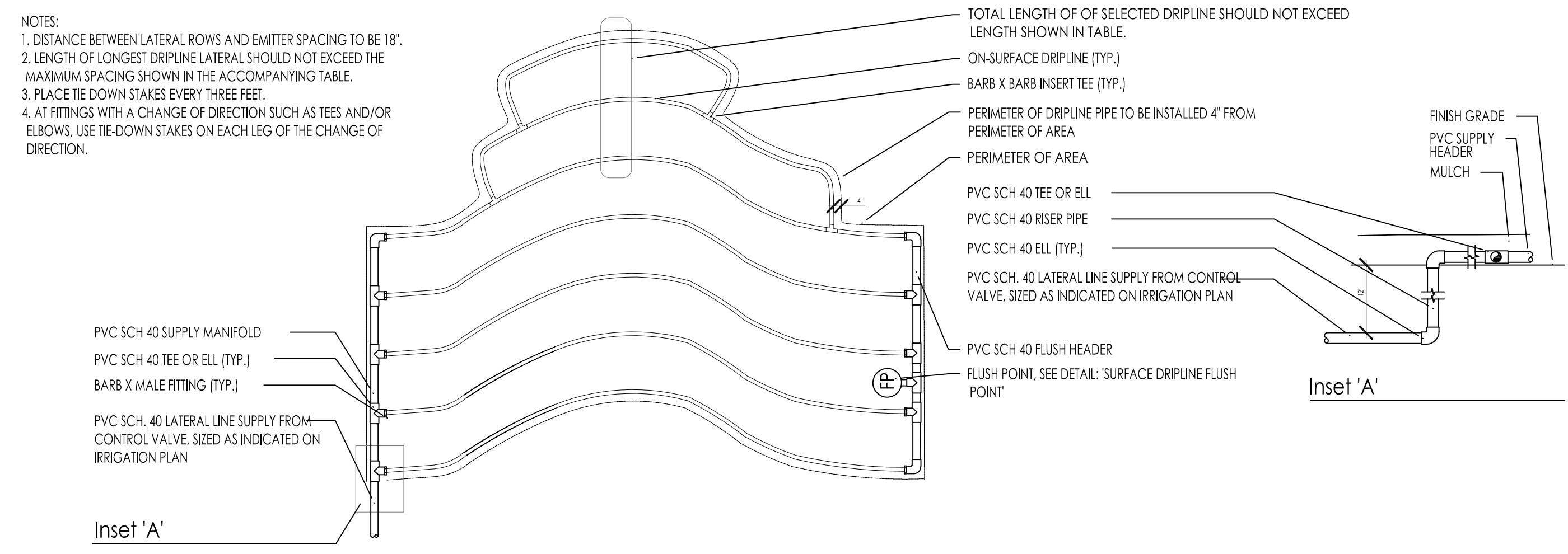


DIPLINE FLUSH POINT 2

- 1 PLASTIC VALVE BOX (WITH EXTENSION AS NEEDED) AND LOCK DOWN LID
 - 2 PRE-VALVE MANIFOLD ASSEMBLY
 - 3 QUICK COUPLER VALVE WITH SCH. 80 NIPPLE INTO SCH. 80 TEE (TOP OF VALVE TO BE 3" MAX. BELOW BOTTOM OF LID WITH PROPER CLEARANCE FOR KEY)
 - 4 BRASS BALL VALVE WITH HANDLE TURNED UPWARDS FOR 'OFF' POSITION
 - 5 FINISH GRADE
 - 6 CONTROL WIRE CONNECTION WITH 18 - 24" WIRE COILED FOR SERVICE
 - 7 ELECTRIC CONTROL VALVE
 - 8 SCH. 80 PVC COUPLING
 - 9 PVC LINE TO SPRINKLERS
 - 10 SCH. 80 PVC THREADED UNION WITH SCH. 80 PVC NIPPLE ON OUTLET SIDE
 - 11 6" MIN. LAYER OF 3/4" MINUS GRAVEL
 - 12 FABRIC LINER
 - 13 CONCRETE THRUST BLOCK WITH 2) #3 BARS WRAPPED AROUND FITTING AS SHOWN
 - 14 MANUAL DRAIN VALVE
 - 15 SCH. 80 FITTINGS THROUGHOUT MANIFOLD
 - 16 MAIN LINE FITTING
 - 17 4" SCH. 80 PVC PIPE (LENGTH AS REQ'D)
- NOTES:
 1. LANDSCAPE CONTRACTOR SHALL BE RESPONSIBLE FOR COMPLETE DRAINAGE OF THE CONTROL VALVE MANIFOLD.
 2. INSTALL SCH. 80 PVC FITTING THROUGHOUT MANIFOLD.
 3. ALL VALVE BOXES SHALL SIT ON 8" MIN. GRAVEL LAYER WITH FABRIC LINER.
 4. OPENING IN VALVE BOX FOR PIPING TO BE LARGE ENOUGH FOR BOX TO NOT REST ON PIPING.
 5. VALVE BOX SIZE TO BE SUFFICIENT TO REMOVE VALVE WITH BOX IN PLACE.

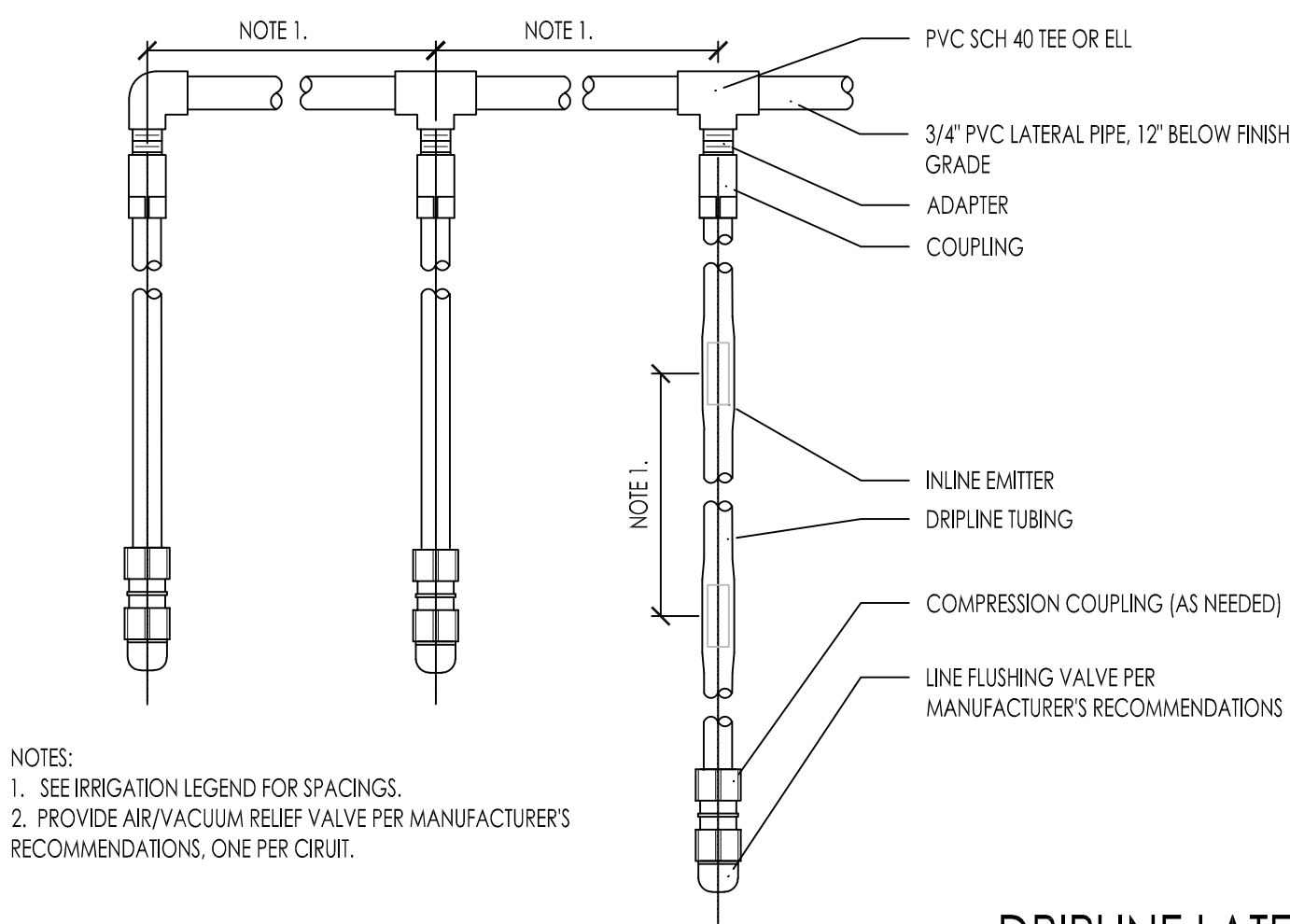


ELECTRIC REMOTE CONTROL VALVE MANIFOLD 3

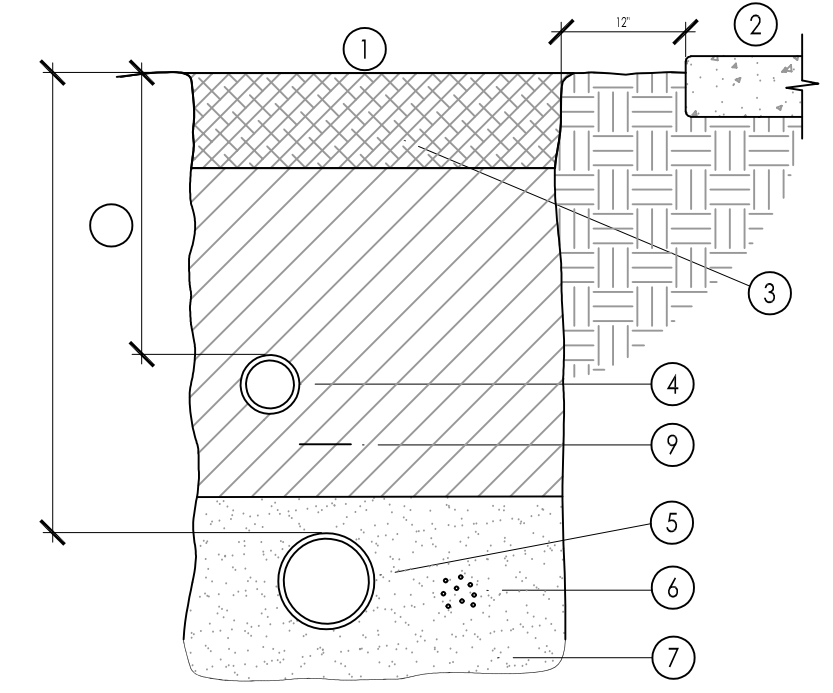


Dripline Maximum Lateral Lengths (Feet)

PSI	18" SPACING	
	0.4 GPH	0.9 GPH
15	314	250
20	353	294
30	413	350
40	465	402
50	528	420
60	596	455



DIPLINE LATERALS 5



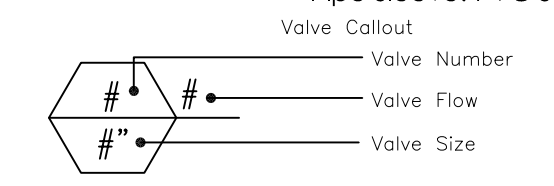
DIPLINE LAYOUT 4

- 1 IF LAWN IS EXISTING, REPLACE SOD AS PER OWNER'S SPECIFICATIONS
- 2 ADJACENT HARD SURFACE
- 3 TOPSOIL FREE FROM ROCKS GREATER THAN 1" DIAMETER. LAYER THICKNESS AS INDICATED IN PLANTING NOTES
- 4 NON-PRESSURE LATERAL LINE
- 5 PRESSURE MAIN LINE
- 6 DIRECT BURIAL, LOW VOLTAGE CONTROL WIRES: TAPE AND BUNDLE AT 10" O.C. PLACE 6" EITHER SIDE, OR 6" BELOW MAIN LINE PIPE.
- 7 MORTAR SAND BEDDING 2" BELOW AND ABOVE PIPE
- 8 PIPE DEPTHS: MAIN LINE: 24 - 30" COVER LATERAL LINE: 8 - 16" COVER BACKFILL SOIL FREE FROM ROCKS GREATER THAN 1" DIAMETER.
- 9 DECTABLE WARNING TAPE AT MAIN LINE

TRENCH DETAIL 6

IRRIGATION SCHEDULE

SYMBOL	MANUFACTURER/MODEL/DESCRIPTION
	Rain Bird 1804-PRS-NP 8 Series MPR Turf Spray 4.0" Pop-Up Sprinkler with Co-Molded Wiper Seal, 1/2" NPT Female Threaded Inlet. Pressure Regulating. With Non Potable Purple Cap.
	Rain Bird 1804-PRS-NP 10 Series MPR Turf Spray 4.0" Pop-Up Sprinkler with Co-Molded Wiper Seal, 1/2" NPT Female Threaded Inlet. Pressure Regulating. With Non Potable Purple Cap.
	Rain Bird 1804-PRS-NP 12 Series MPR Turf Spray 4.0" Pop-Up Sprinkler with Co-Molded Wiper Seal, 1/2" NPT Female Threaded Inlet. Pressure Regulating. With Non Potable Purple Cap.
	Rain Bird R-VAN-1724 1804-SAM-P45 Turf Rotator, 17"-24" Hand Adjustable Rotary Stream, w/1800 turf spray body, 4.0" Pop-Up. With Seal-A-Matic Check Valve and 45 psi in-stem pressure regulation.
	Rain Bird LFV-100 1" Low Flow DV Valve
	Pipe Transition Point above grade Pipe transition point from PVC lateral to drip tubing with riser to above grade installation.
	Area to Receive Dripline Rain Bird XFCV-09-18 [18] XFCV On-Surface Landscape Dripline with a Heavy-Duty 3.5 psi Check Valve, 0.9GPH emitters at 18.0" O.C. Dripline laterals spaced at 18.0' apart, with emitters offset for triangular pattern. Great for elevation change. Specify XF insert fittings.
	Rain Bird PEB-PRS-D 1", 1-1/2", 2" Plastic Industrial Valves. Low Flow Operating Capability, Globe Configuration. With Pressure Regulator Module.
	Rain Bird 5-NP 1" Brass Quick-Coupling Valve, with Corrosion-Resistant Stainless Steel Spring, Locking Non-Potable Purple Rubber Cover, and 1-Piece Body.
	Nibco T-113-K Class 125 bronze gate shut off valve with cross handle, same size as mainline pipe diameter at valve location. Size Range - 1/4" - 3"
	Rain Bird EFB-CP 1-1/2" 1", 1-1/4", 1-1/2", 2" Brass Master Valve, that is Contamination Proof w/Self-Flushing Filter Screen. Globe Configuration, Reclaimed Water Compatible, and Purple Handle Cover Designates Non-Potable Water Use.
	Air Relief Valve
	Drain Valve
	Zurn 950XL 1-1/2" Double Check Valve Assembly
	Rain Bird ESP-LCD-LXMMSS with (1)ESPLXD-SM75 125 Station 2-Wire Ext. stainless steel metal cabinet. Flow Sensing. Specify Rain Bird pigtail with this controller.
	Rain Bird FS-150-B 1-1/2" Flow Sensor for use with Rain Bird Maxicom, SiteControl, and ESP-LXD Central Control Systems. Brass Model. Suggested Operating Range of 2.0 GPM to 82.6 GPM. Sensors should be sized for flow rather than pipe size.
	Water Meter 1-1/2"
	Water Meter 1-1/2"
	Irrigation Lateral Line: PVC Schedule 40 Blu-Lock pipe, as manufactured by Hydro Rain, 1/2" to 1", then PVC Class 200 for 1-1/4" and larger. Only lateral transition pipe sizes 1" and above are indicated on the plan, with all others being 3/4" in size.
	Irrigation Mainline: Polyethylene and PVC Class 160 Blu-Lock pipe, as manufactured by Hydro Rain, 1/2" to 1", then PVC Class 200 for 1-1/4" and larger.
	Pipe Sleeve: PVC Schedule 40



Architecture
Interior Design
Landscape Architecture
Land Planning
Construction Management

5151 South 900 East, Suite 200
Salt Lake City, UT 84117
Ph: 801.269.0055
Fax: 801.269.1425
www.thinkaec.com

The designs shown and described herein including all technical drawings, graphic representation & models thereof, are proprietary & can not be copied, duplicated, or commercially exploited in whole or in part without the sale and express written permission from ASWN+SA Architects, Inc.

These drawings are available for limited review and evaluation by clients, consultants, contractors, government agencies, vendors and office personnel only in accordance with this notice.



AUTUMN SKY TOWNHOMES

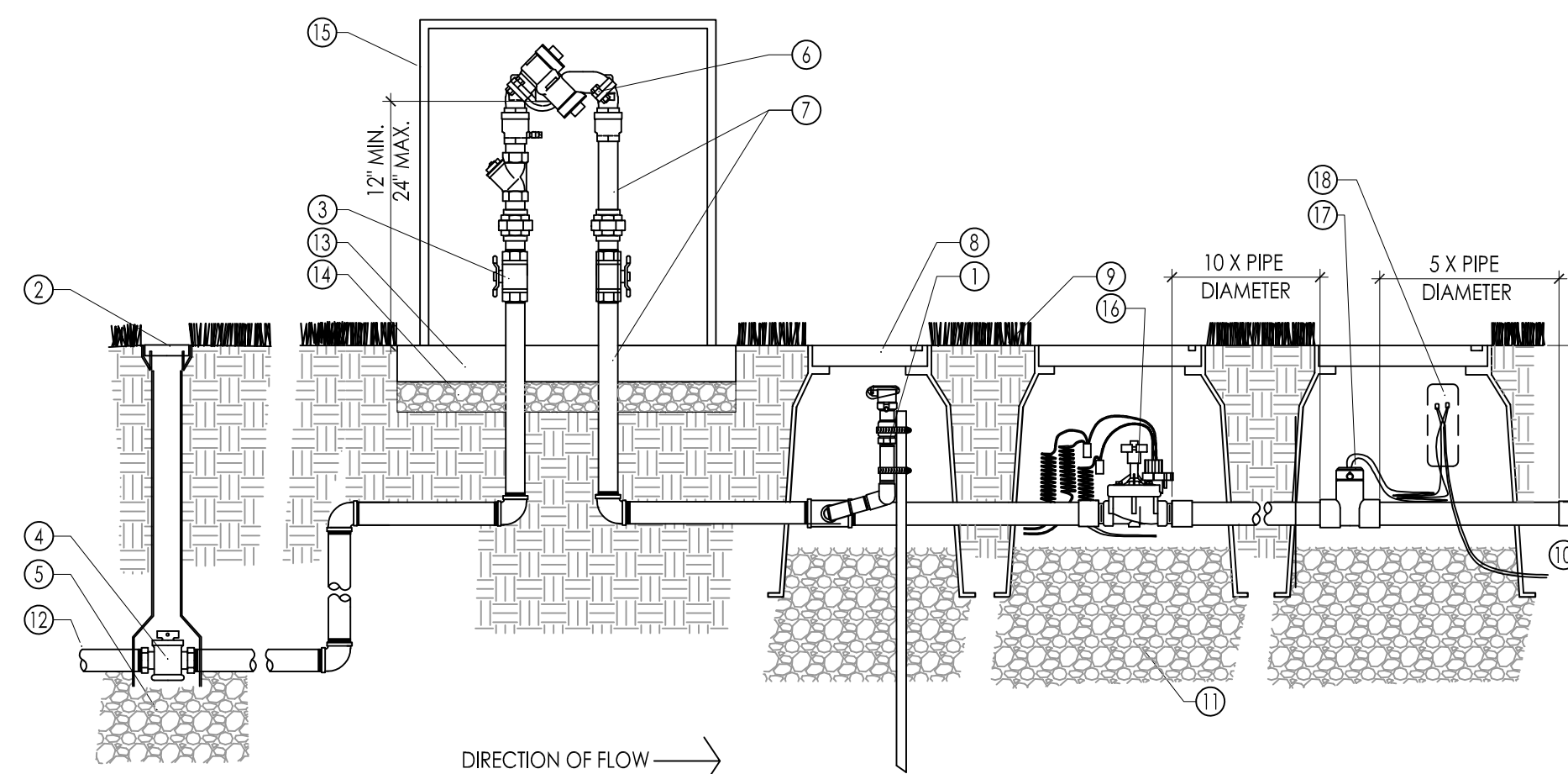
HERRIMAN, UTAH

PROJECT NO. 16074
DATE: DEC 14, 2016

REVISIONS:

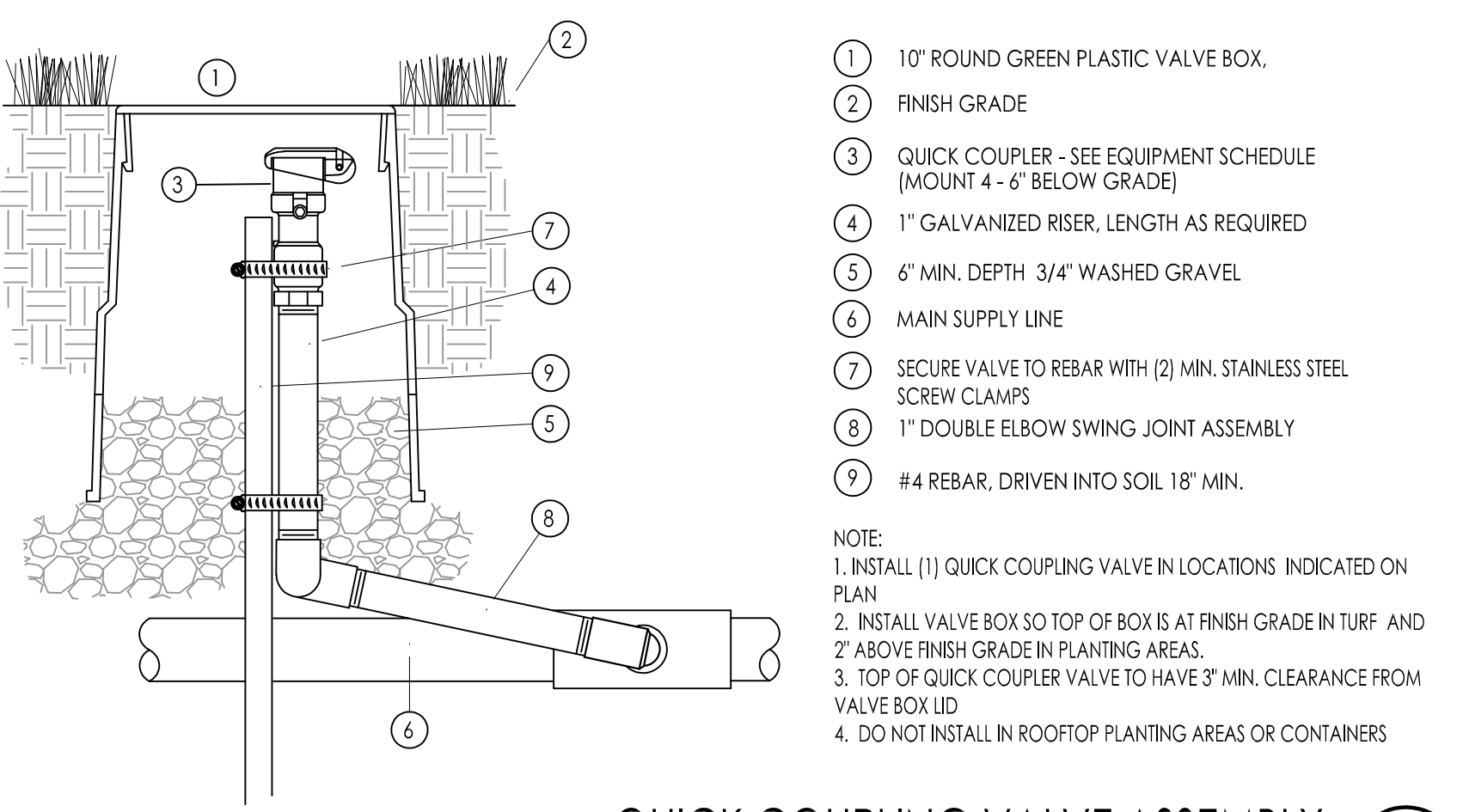
SHEET TITLE:
IRRIGATION
DETAILS
SHEET NUMBER:

LI501



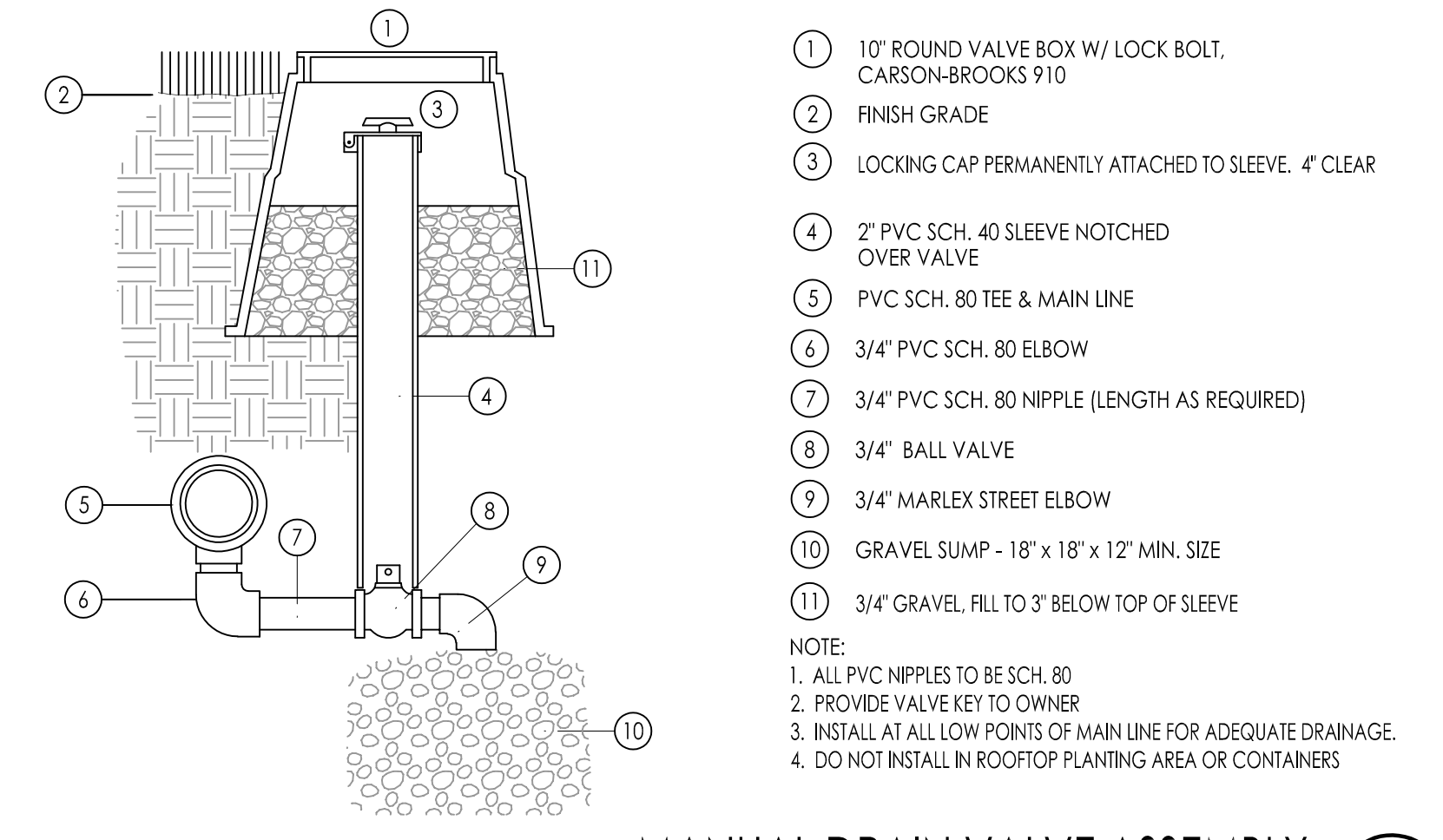
- 1 QUICK COUPLER VALVE
 - 2 CURB BOX, LENGTH AS REQUIRED
 - 3 BRONZE BALL VALVE
 - 4 STOP AND WASTE VALVE, SIZE TO MATCH MAIN LINE
 - 5 GRAVEL DRAIN SUMP, 3/4" WASHED GRAVEL, 3 CU. FT. MINIMUM
 - 6 BACKFLOW PREVENTER, SEE IRRIGATION LEGEND FOR SIZE AND TYPE
 - 7 GALVANIZED PIPE AND FITTINGS UNLESS OTHERWISE INDICATED
 - 8 VALVE BOX WITH LID, TYPICAL
 - 9 FINISH GRADE
 - 10 SCH 40 PVC PIPE IRRIGATION MAIN LINE, SIZE PER PLAN
 - 11 3/4" WASHED GRAVEL, 6" MINIMUM DEEP
 - 12 MAIN LINE FROM WATER METER
 - 13 4" CONCRETE PAD
 - 14 6" GRAVEL OVER COMPACTED SUB-BASE
 - 15 V.I.T PRODUCTS / STRONG BOX, STAINLESS STEEL VANDAL RESISTANT ENCLOSURE, SIZED TO ACCOMMODATE EQUIPMENT
 - 16 MASTER VALVE WITH 36" LENGTH OF COILED WIRE TO CONTROLLER, SEE IRRIGATION LEGEND
 - 17 FLOW SENSOR WITH 36" LENGTH OF COILED PE-CABLE TO FLOW SENSING EQUIPMENT AT CONTROLLER, SEE IRRIGATION LEGEND
 - 18 WIRE SPLICE, SEE MANUFACTURER'S RECOMMENDATIONS
 - 19 Y TYPE STRAINER
- NOTE:
 1. ALL VALVE BOXES TO HAVE BRICK FOUNDATIONS.
 2. LOCATION OF BACKFLOW PREVENTER TO BE APPROVED BY LANDSCAPE ARCHITECT.
 3. BACKFLOW PREVENTER TO BE INSTALLED IN ACCORDANCE WITH LOCAL CODE.
 4. PROVIDE 12" MINIMUM CLEARANCE ON ALL SIDES OF BACKFLOW PREVENTER.

BACKFLOW PREVENTER ASSEMBLY 1



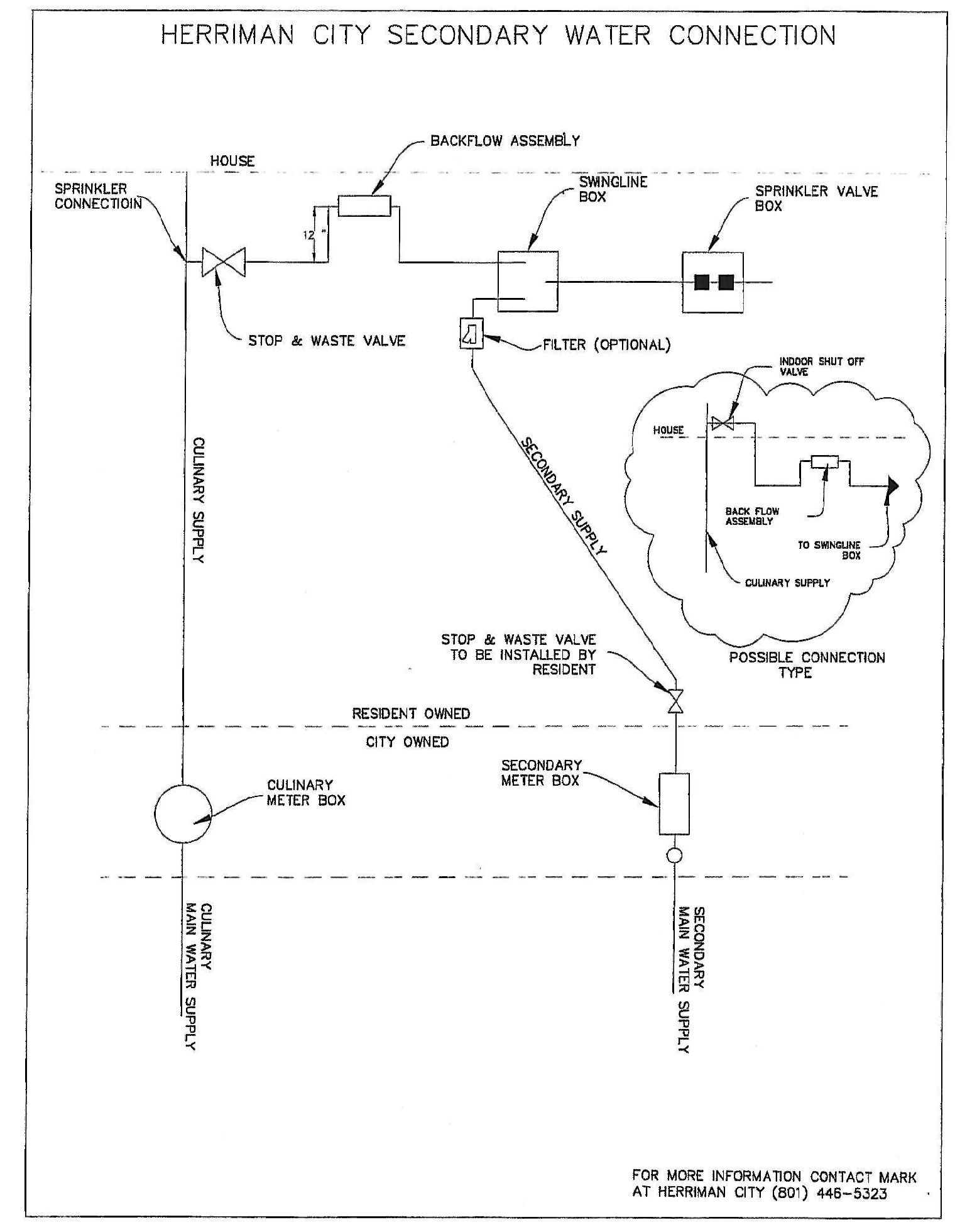
- 1 10" ROUND GREEN PLASTIC VALVE BOX
 - 2 FINISH GRADE
 - 3 QUICK COUPLER - SEE EQUIPMENT SCHEDULE (MOUNT 4 - 6" BELOW GRADE)
 - 4 1" GALVANIZED RISER, LENGTH AS REQUIRED
 - 5 6" MIN. DEPTH 3/4" WASHED GRAVEL
 - 6 MAIN SUPPLY LINE
 - 7 SECURE VALVE TO REBAR WITH (2) MIN. STAINLESS STEEL SCREW CLAMPS
 - 8 1" DOUBLE ELBOW SWING JOINT ASSEMBLY
 - 9 #4 REBAR, DRIVEN INTO SOIL 18" MIN.
- NOTE:
 1. INSTALL (1) QUICK COUPLING VALVE IN LOCATIONS INDICATED ON PLAN
 2. INSTALL VALVE BOX SO TOP OF BOX IS AT FINISH GRADE IN TURF AND 2" ABOVE FINISH GRADE IN PLANTING AREAS.
 3. TOP OF QUICK COUPLER VALVE TO HAVE 3" MIN. CLEARANCE FROM VALVE BOX LID
 4. DO NOT INSTALL IN ROOFTOP PLANTING AREAS OR CONTAINERS

QUICK COUPLING VALVE ASSEMBLY 2



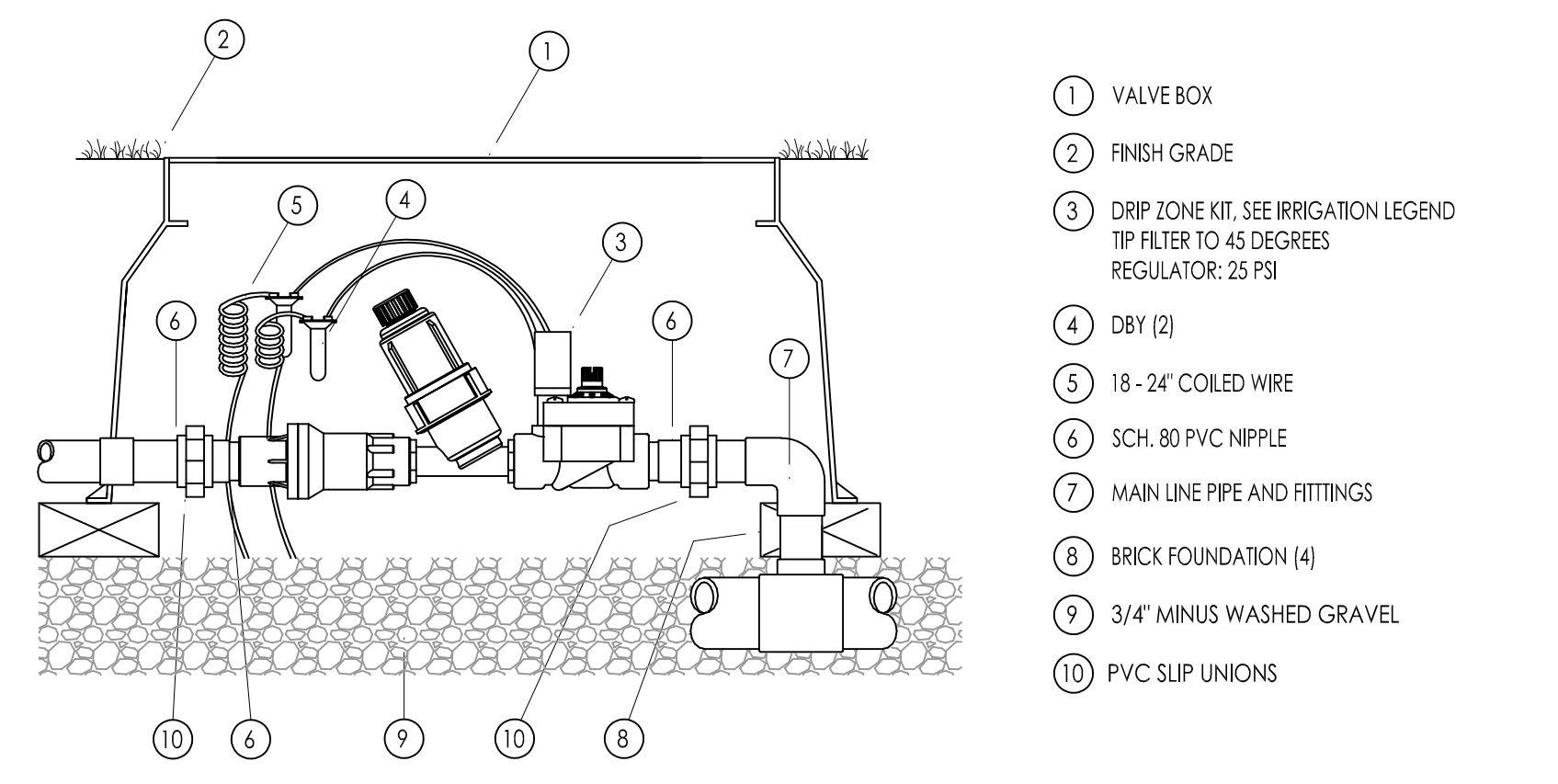
- 1 10" ROUND VALVE BOX W/ LOCK BOLT, CARSON-BROOKS 910
 - 2 FINISH GRADE
 - 3 LOCKING CAP PERMANENTLY ATTACHED TO SLEEVE, 4" CLEAR
 - 4 2" PVC SCH. 40 SLEEVE NOTCHED OVER VALVE
 - 5 PVC SCH. 80 TEE & MAIN LINE
 - 6 3/4" PVC SCH. 80 ELBOW
 - 7 3/4" PVC SCH. 80 NIPPLE (LENGTH AS REQUIRED)
 - 8 3/4" BALL VALVE
 - 9 3/4" MARLEX STREET ELBOW
 - 10 GRAVEL SUMP - 18" x 18" x 12" MIN. SIZE
 - 11 3/4" GRAVEL FILL TO 3" BELOW TOP OF SLEEVE
- NOTE:
 1. ALL PVC NIPPLES TO BE SCH. 80
 2. PROVIDE VALVE KEY TO OWNER
 3. INSTALL AT ALL LOW POINTS OF MAIN LINE FOR ADEQUATE DRAINAGE.
 4. DO NOT INSTALL IN ROOFTOP PLANTING AREA OR CONTAINERS

MANUAL DRAIN VALVE ASSEMBLY 3



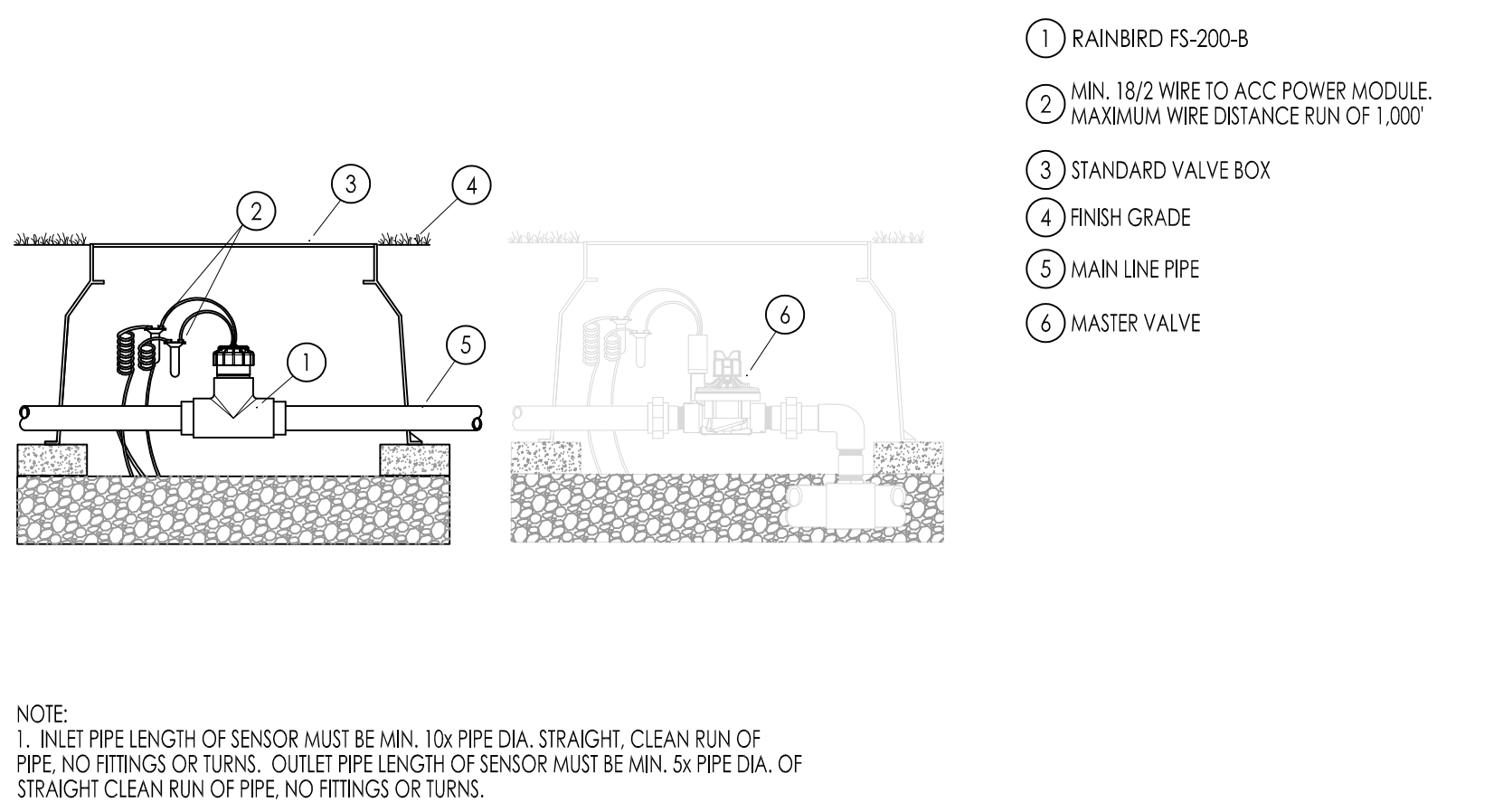
FOR MORE INFORMATION CONTACT MARK AT HERRIMAN CITY (801) 448-5323

P.O.C. DETAIL 4



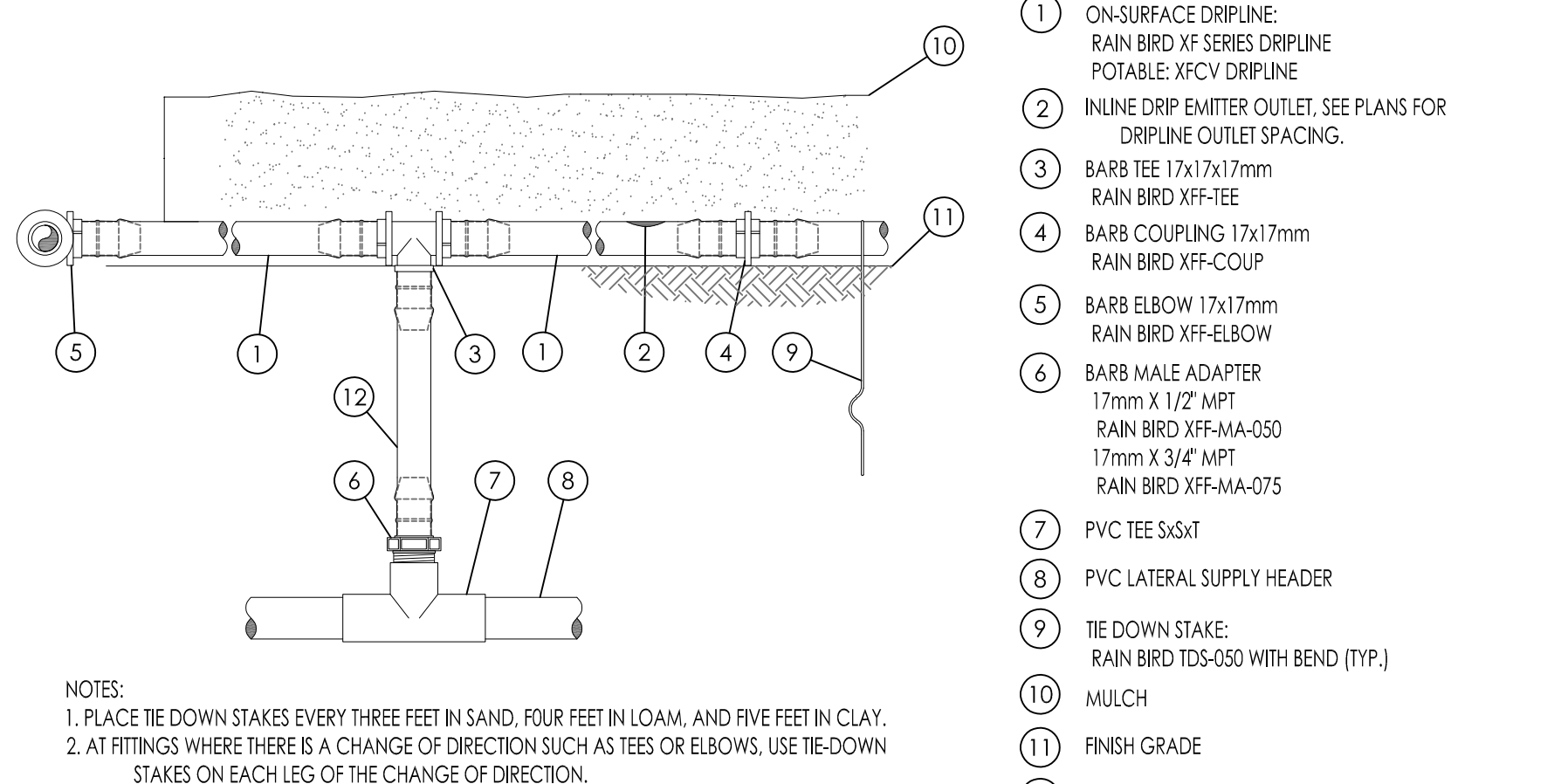
- 1 VALVE BOX
- 2 FINISH GRADE
- 3 DRIP ZONE KIT, SEE IRRIGATION LEGEND (MOUNT 4 - 6" BELOW GRADE)
- 4 DBY (2)
- 5 18 - 24' COILED WIRE
- 6 SCH. 80 PVC NIPPLE
- 7 MAIN LINE PIPE AND FITTINGS
- 8 BRICK FOUNDATION (4)
- 9 3/4" MINUS WASHED GRAVEL
- 10 PVC SLIP UNIONS

DRIP CONTROL ZONE KIT 5



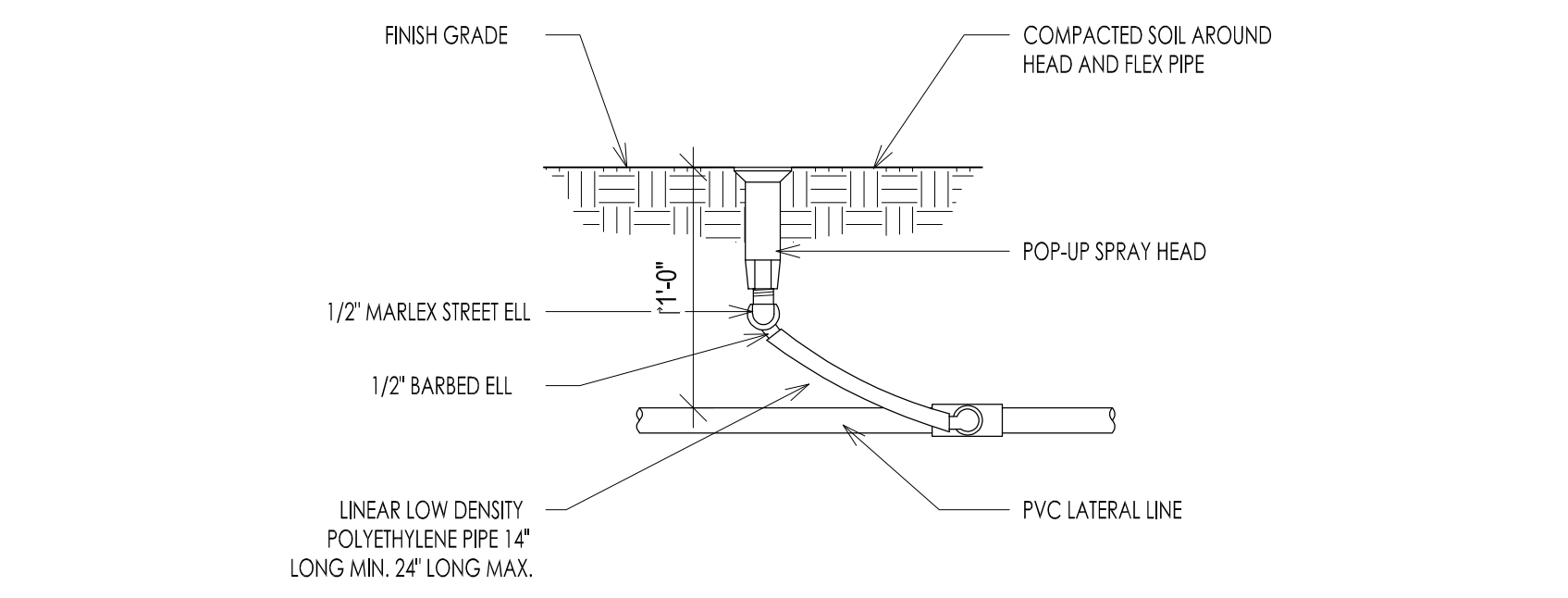
- 1 RAINBIRD FS-200-B
 - 2 MIN. 18/2 WIRE TO ACC POWER MODULE. MAXIMUM WIRE DISTANCE RUN OF 1,000'
 - 3 STANDARD VALVE BOX
 - 4 FINISH GRADE
 - 5 MAIN LINE PIPE
 - 6 MASTER VALVE
- NOTE:
 1. INLET PIPE LENGTH OF SENSOR MUST BE MIN. 10x PIPE DIA. STRAIGHT, CLEAN RUN OF PIPE. NO FITTINGS OR TURNS. OUTLET PIPE LENGTH OF SENSOR MUST BE MIN. 5x PIPE DIA. OF STRAIGHT CLEAN RUN OF PIPE. NO FITTINGS OR TURNS.

FLOW SENSOR 6



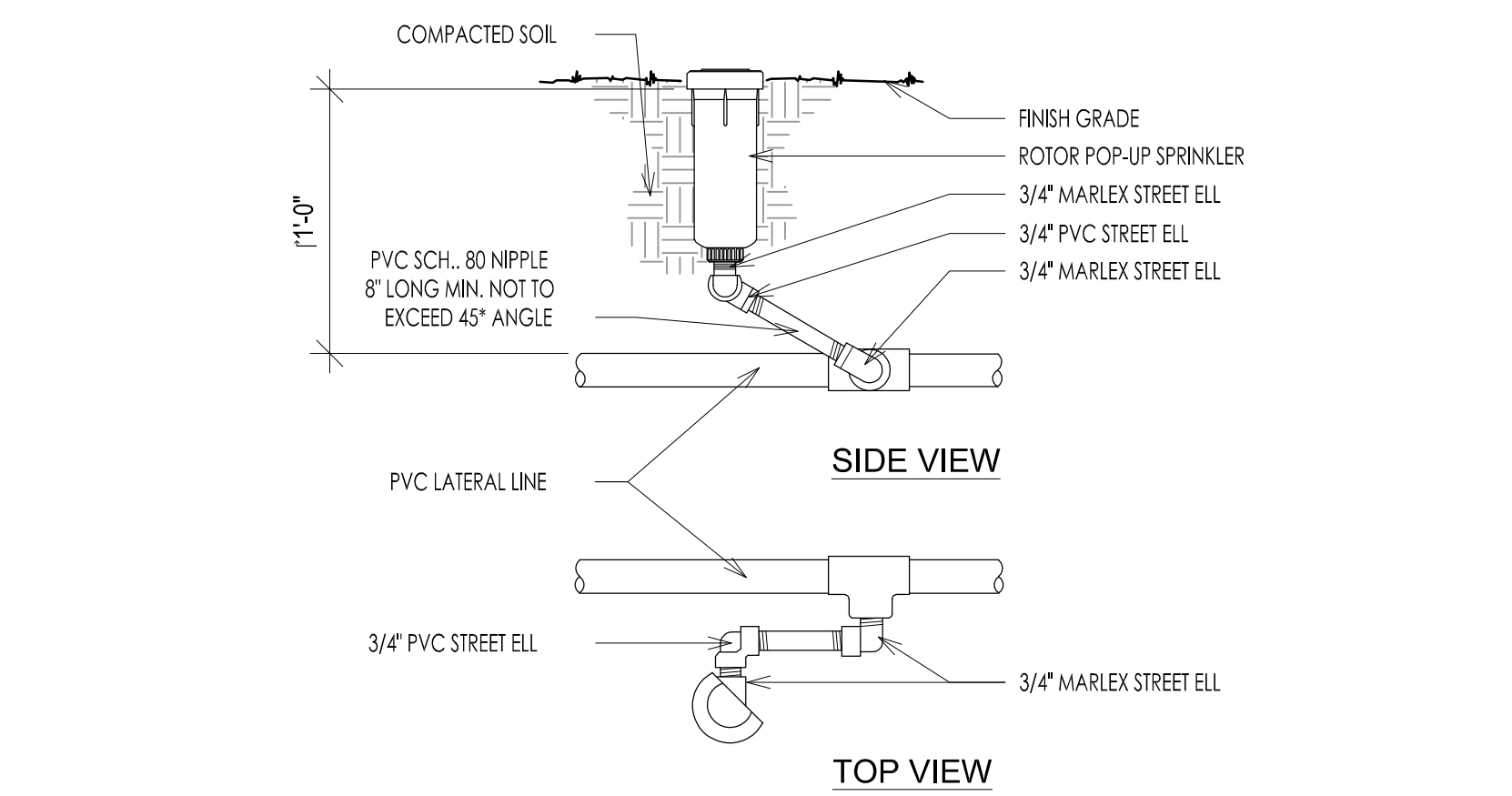
- 1 ON-SURFACE DRIPLINE: RAIN BIRD XF SERIES DRIPLINE POTABLE: XFCV DRIPLINE
 - 2 INLINE DRIP EMITTER OUTLET, SEE PLANS FOR DRIPLINE OUTLET SPACING.
 - 3 BARB TEE 17x17x17mm RAIN BIRD XF-TEE
 - 4 BARB COUPLING 17x17mm RAIN BIRD XF-COUP
 - 5 BARB ELBOW 17x17mm RAIN BIRD XF-ELBOW
 - 6 BARB MALE ADAPTER 17mm X 1/2" MPT RAIN BIRD XF-MA-050 17mm X 3/4" MPT RAIN BIRD XF-MA-075
 - 7 PVC TEE 5x5x4
 - 8 PVC LATERAL SUPPLY HEADER
 - 9 TIE DOWN STAKE: RAIN BIRD TDS-050 WITH BEND (TYP.)
 - 10 MULCH
 - 11 FINISH GRADE
 - 12 RAIN BIRD XF SERIES BLANK TUBING LENGTH AS REQ'D
- NOTES:
 1. PLACE TIE DOWN STAKES EVERY THREE FEET IN SAND, FOUR FEET IN LOAM, AND FIVE FEET IN CLAY.
 2. AT FITTINGS WHERE THERE IS A CHANGE OF DIRECTION SUCH AS TEES OR ELBOWS, USE TIE-DOWN STAKES ON EACH LEG OF THE CHANGE OF DIRECTION.
 3. SAVE YOUR HANDS. USE THE RAIN BIRD FITTING-TOOL XF INSERTION TOOL FOR FITTING ASSEMBLY.

DRIPLINE RISER ASSEMBLY 7



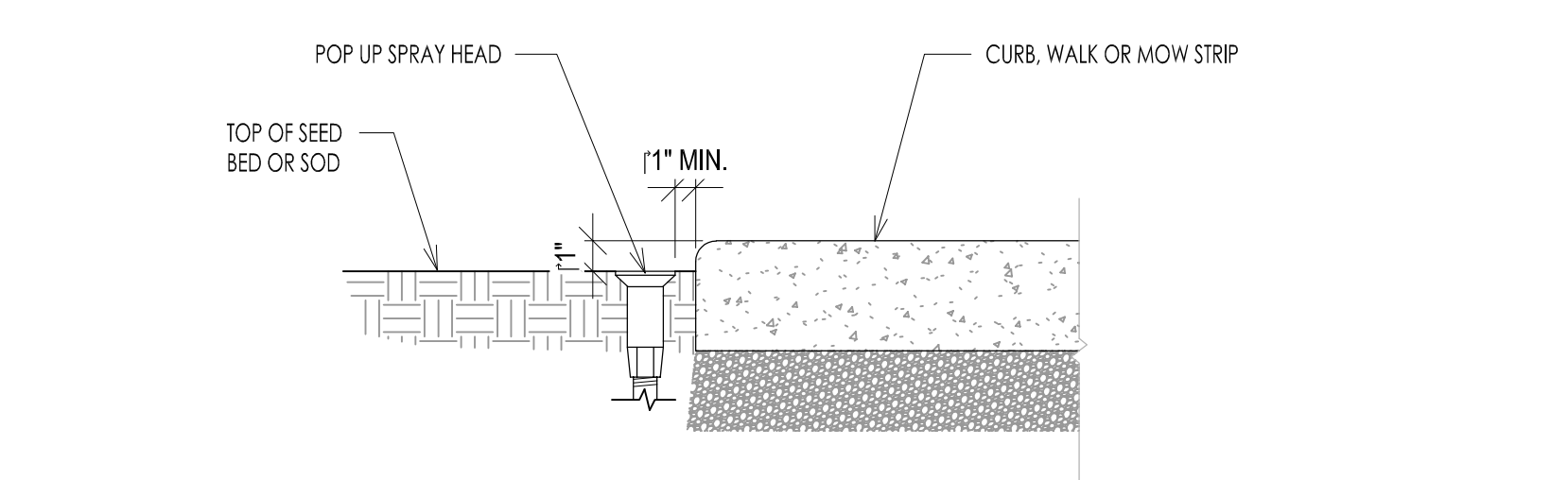
- FINISH GRADE
- COMPACTED SOIL AROUND HEAD AND FLEX PIPE
- POP-UP SPRAY HEAD
- 1/2" MARLEX STREET ELL
- 1/2" BARBED ELL
- LINEAR LOW DENSITY POLYETHYLENE PIPE 1/4" LONG MIN. 24" LONG MAX.
- PVC LATERAL LINE

SPRAY OR ROTARY HEAD ASSEMBLY 8



- COMPACTED SOIL
- FINISH GRADE
- ROTOR POP-UP SPRINKLER
- 3/4" MARLEX STREET ELL
- 3/4" PVC STREET ELL
- 3/4" MARLEX STREET ELL
- PVC LATERAL LINE
- 3/4" PVC STREET ELL
- 3/4" MARLEX STREET ELL

ROTOR POP-UP HEAD 9



- POP UP SPRAY HEAD
- TOP OF SEED BED OR SOD
- 1" MIN.
- CURB, WALK OR MOW STRIP

SPRAY OR ROTARY HEAD NEXT TO HARDSCAPE 10



Architecture
 Interior Design
 Landscape Architecture
 Land Planning
 Construction Management

5151 South 900 East, Suite 200
 Salt Lake City, UT 84117
 Ph: 801.269.0055
 Fax: 801.269.1425
 www.thinkaec.com

The designs shown and described herein including all technical drawings, graphic representation & models thereof, are proprietary & can not be copied, duplicated, or commercially exploited in whole or in part without the sale and express written permission from ASW+SA Architects, Inc.

These drawings are available for limited review and evaluation by clients, consultants, contractors, government agencies, vendors and office personnel only in accordance with this notice.



AUTUMN SKY TOWNHOMES
 HERRIMAN, UTAH

PROJECT NO. 16074
 DATE: DEC 14, 2016

SHEET TITLE:
 IRRIGATION
 DETAILS

SHEET NUMBER:

LI502



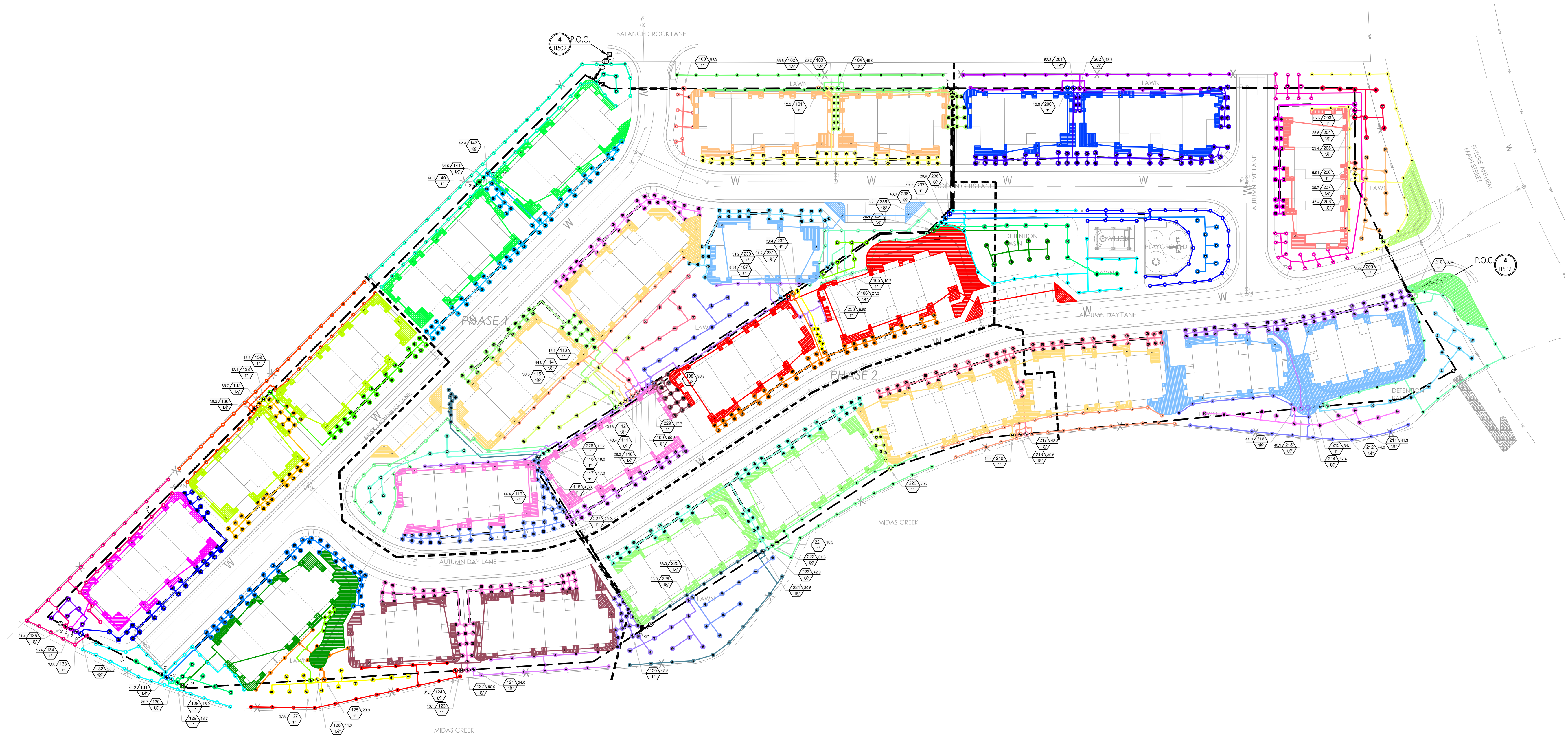
Think
Architecture

Architecture
Interior Design
Landscape Architecture
Land Planning
Construction Management

5151 South 900 East, Suite 200
Salt Lake City, UT 84117
Ph: 801.269.0855
Fax: 801.269.1425
www.thinkaec.com

The designs shown and described herein including all technical drawings, graphic representation & models thereof, are proprietary & can not be copied, duplicated, or commercially exploited in whole or in part without the sale and express written permission from ASWN+SA Architects, Inc.

These drawings are available for limited review and evaluation by clients, consultants, contractors, government agencies, vendors and office personnel only in accordance with this notice.



AUTUMN SKY TOWNHOMES

HERRIMAN, UTAH

PROJECT NO. 16074
DATE: DEC 14, 2016
REVISIONS:

SHEET TITLE:
IRRIGATION PLAN

SHEET NUMBER:
LI106

(A) IRRIGATION ZONES

SCALE 1" = 50'-0" (24' x 36")
SCALE 1" = 100'-0" (12' x 18")

