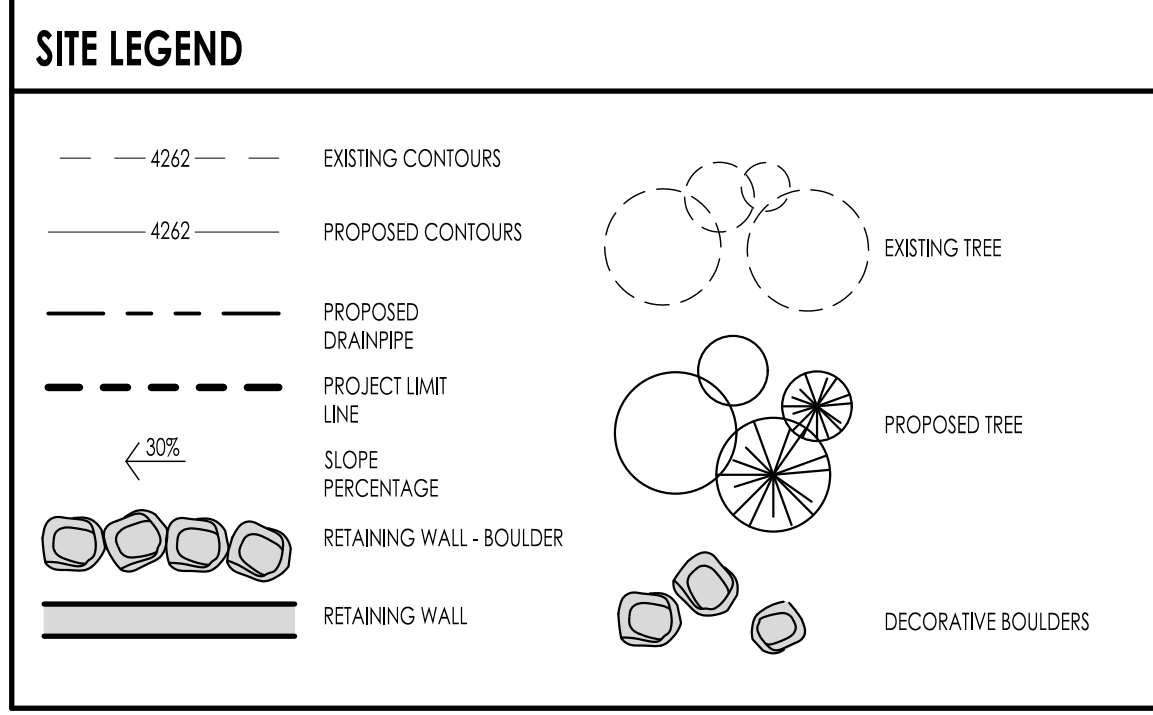
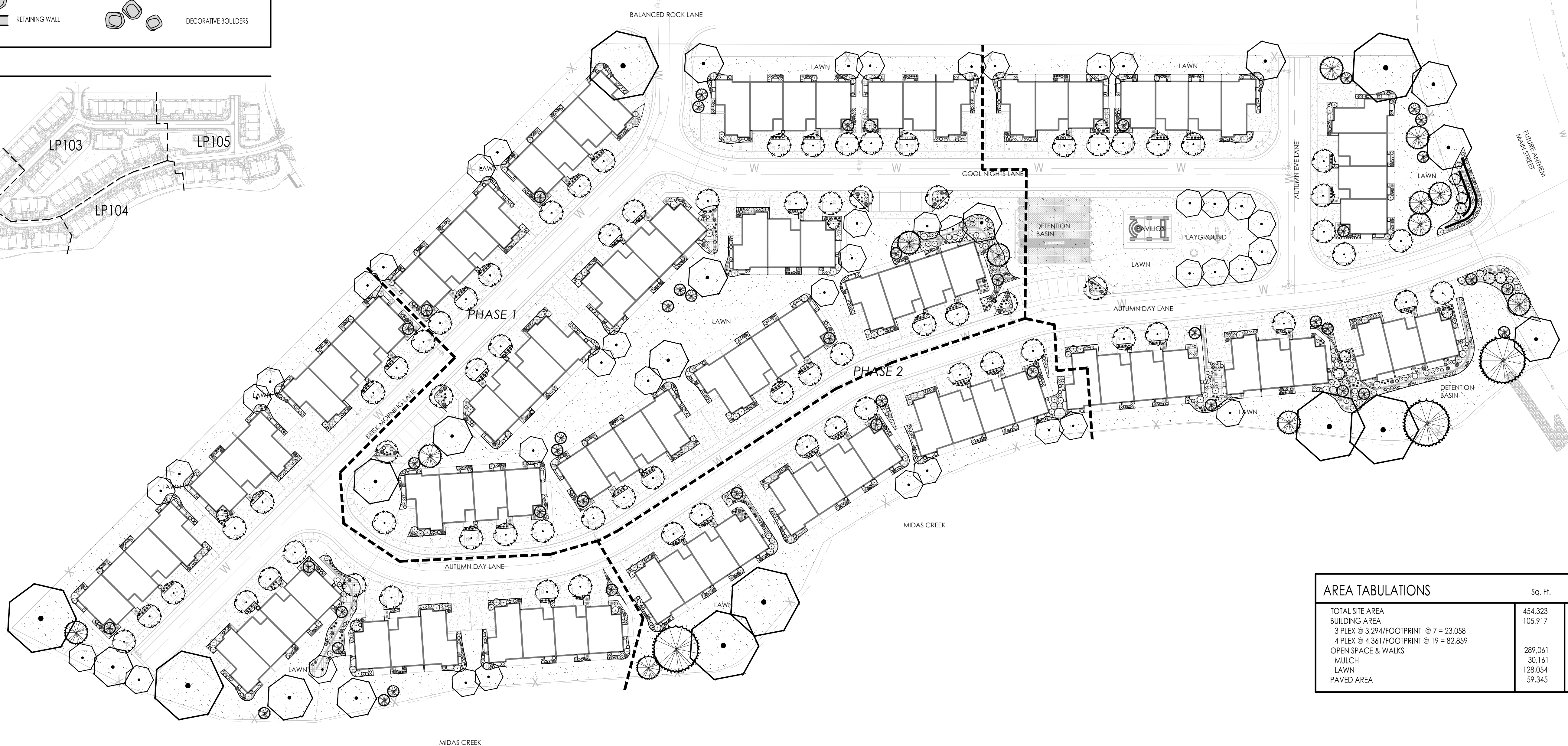
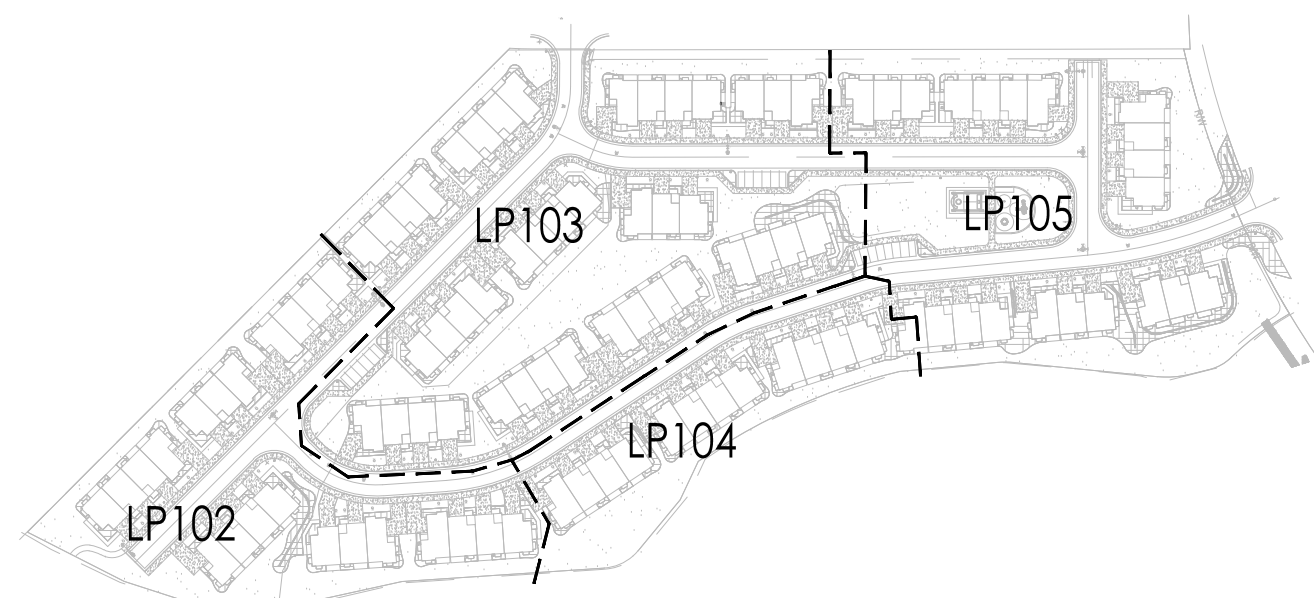


| PRELIMINARY LANDSCAPE LEGEND | | | |
|---|---|---|---|
| <p>SHADE TREES</p> <ul style="list-style-type: none"> OCTOBER GLORY MAPLE HEDGE MAPLE TULIP TREE <p>ORNAMENTAL AND FLOWERING TREES</p> <ul style="list-style-type: none"> BAILLEY COMPACT MAPLE EASTERN REDBUD KWANZAN CHERRY CHANTICLEER FLOWERING PEAR REDSPIRE FLOWERING PEAR REDMOND LINDEN <p>EVERGREEN TREES</p> <ul style="list-style-type: none"> BLUE ATLAS CEDAR COLUMNAR NORWAY SPRUCE BLACK HILLS SPRUCE WEeping WHITE SPRUCE DOLLY'S CHOICE MUGO PINE | <p>SHRUBS</p> <ul style="list-style-type: none"> RUBY CAROUSEL BARBERRY BLUE MIST SPIREA BALISEY DWARF DOGWOOD KELSEY DWARF DOGWOOD CORAL BEAUTY COTONEASTER DWARF BURNING BUSH EUONYMUS <p>PERENNIALS</p> <ul style="list-style-type: none"> HAPPY RETURNS DAYLILY STELLA DE ORO DAYLILY PLANTAIN LILY OZARK SUNDROPS EVENING PRIMROSE <p>ORNAMENTAL GRASSES</p> <ul style="list-style-type: none"> KARL FOERSTER FEATHER GRASS <p>LANDSCAPE BOULDERS</p> | <ul style="list-style-type: none"> BUFFALO JUNIPER COMPACT OREGON GRAPE DWARF MUGO PINE JACKMANI POTENTILLA OTTO LUYKENS LAUREL PURPLELEAF SAND CHERRY <ul style="list-style-type: none"> GROW LOW FRAGRANT SUMAC ALPINE CURRANT NEON FLASH SPIREA DWARF SPREADING YEW <p>GROUND COVER</p> <ul style="list-style-type: none"> CREeping OREGON GRAPE | <p>Notes:</p> <ol style="list-style-type: none"> All planting areas to receive 4" minimum layer of rock mulch, excluding areas of perennials and ground cover. Rock mulch to be approved by Landscape Architect prior to installation. All Deciduous Trees to be 2" cal. min. All Evergreen Trees to be 4'-0" min. All shrubs to be 5 gal. min. All perennials to be 1 gal. min. Ground Cover to be from stock grown in flats, F/36 minimum. |

| GENERAL PLANTING NOTES |
|--|
| 1. CONTRACTOR SHALL BE RESPONSIBLE FOR BECOMING AWARE OF ALL RELATED EXISTING CONDITIONS, UTILITIES, PIPES, AND STRUCTURES, ETC. PRIOR TO BIDDING AND CONSTRUCTION. THE CONTRACTOR SHALL BE RESPONSIBLE FOR CONTACTING ALL UTILITY COMPANIES FOR FIELD LOCATION OF ALL UNDERGROUND UTILITY LINES, INCLUDING DEPTHS, PRIOR TO ANY EXCAVATION. CONTRACTOR SHALL TAKE SOLE RESPONSIBILITY FOR ANY AND ALL COST OR OTHER LIABILITIES INCURRED DUE TO DAMAGE OF SAID UTILITIES/STRUCTURES, ETC. |
| 2. IF CONFLICTS ARISE BETWEEN SIZE OF AREAS AND PLANS, CONTRACTOR IS REQUIRED TO CONTACT OWNER'S REPRESENTATIVE FOR RESOLUTION. FAILURE TO MAKE SUCH CONFLICTS KNOWN TO THE OWNER'S REPRESENTATIVE WILL RESULT IN CONTRACTOR'S LIABILITY TO RELOCATE THE MATERIALS. |
| 3. PLANT NAMES MAY BE ABBREVIATED ON THE DRAWINGS. SEE PLANT LEGEND FOR ABBREVIATIONS, BOTANICAL/COMMON NAMES, SIZES, AND OTHER REMARKS. |
| 4. IT IS THE CONTRACTOR'S RESPONSIBILITY TO FURNISH ALL PLANT MATERIALS FREE OF PESTS OR PLANT DISEASES AND HAVE NATURAL FULL SHAPES. PRE-SELECTED OR TAGGED MATERIAL MUST BE INSPECTED BY THE CONTRACTOR AND CERTIFIED PEST AND DISEASE FREE. IT IS THE CONTRACTOR'S OBLIGATION TO MAINTAIN AND WARRANT ALL PLANT MATERIALS PER THE SPECIFICATIONS. ALL PLANTS SHALL BE SUBJECT TO OWNER'S APPROVAL PRIOR TO INSTALLATION. |
| 5. PROVIDE MATCHING SIZES AND FORMS FOR EACH SPECIES OF TREES AND PLANTS SPACED EQUALLY IN ROWS AS SHOWN ON DRAWINGS. ADJUST SPACING (EQUAL TO EQUAL) AS NECESSARY. SUBJECT TO ACCEPTANCE BY THE OWNER'S REPRESENTATIVE. |
| 6. CONTRACTOR SHALL IMPORT AND PLACE A MINIMUM OF 12" THICK TOPSOIL TO ALL PLANTING AREAS. HOWEVER, CONTRACTOR MAY STRIP, STOCKPILE AND SCREEN EXISTING TOP SOIL IN THE PROJECT AREA TO SUPPLEMENT THE IMPORTED TOPSOIL REQUIREMENT. IF STRIPPED TOPSOIL IS USED IT SHALL BE TESTED AND BE AMENDED ACCORDING TO THE REQUIREMENTS OF THE HORTICULTURAL / SOIL TEST. |
| 7. TREE STAKING: SEE DETAILS |
| 8. PLACE 4" THICK SHREDDED BARK MULCH IN ALL SHRUB, PERENNIAL/ ANNUALS PLANTING AREAS. |
| 9. PROVIDE A FIVE (5) FOOT DIAMETER SAUCER UNDER ALL TREES PLANTED IN TURF AREAS WITH 4" OF SHREDDED BARK MULCH. |
| 10. PROVIDE LANDSCAPE BOULDERS OF QUANTITY INDICATED AND PLACED AS SHOWN. 30% - 40% OF BOULDERS TO BE BURIED BELOW SURFACE OF MULCH / COBBLE. BOULDER PLACEMENT TO BE APPROVED BY LANDSCAPE ARCHITECT ON SITE. |
| 11. ALL PLANT MATERIAL HOLES SHALL BE DUG TWICE THE DIAMETER OF THE ROOTBALL AND 6 INCHES DEEPER. EXCAVATED MATERIAL SHALL BE REMOVED FROM THE SITE. |
| 12. TREES LESS THAN A TWO-INCH CALIPER MUST BE DOUBLE-STAKED UNTIL THE TREES MATURE TO A TWO-INCH CALIPER. |
| 13. PLANT BACKFILL MIXTURE SHALL BE COMPOSED OF 3 PARTS TOPSOIL TO 1 PART HUMUS ADDITIVE. ON-SITE PRIOR TO INSTALLATION, AND SHALL BE ROTARY MIXED. |

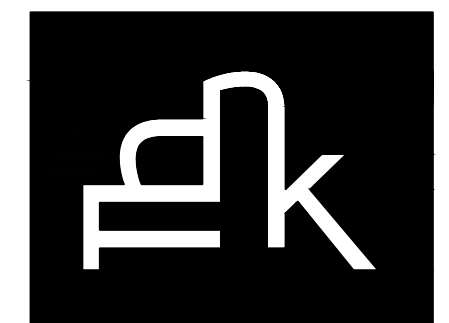
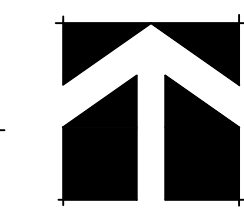


KEY PLAN



| AREA TABULATIONS | Sq. Ft. | Acres | Percentage of total site |
|--|---------|-------|--------------------------|
| TOTAL SITE AREA | 454,323 | 10.42 | 100% |
| BUILDING AREA | 105,917 | | 23% |
| 3 PLEX @ 3.294/FOOTPRINT @ 7 = 23,058 | | | |
| 4 PLEX @ 4.361/FOOTPRINT @ 19 = 82,859 | | | |
| OPEN SPACE & WALKS | 289,061 | 6.63 | 64% |
| MULCH | 30,161 | .69 | 7% |
| LAWN | 128,054 | 2.94 | 28% |
| PAVED AREA | 59,345 | 1.36 | 13% |

PRELIMINARY LANDSCAPE PLAN
 SCALE 1" = 50'-0" (24' x 36")
 SCALE 1" = 100'-0" (12' x 18")



Think
Architecture

Architecture
 Interior Design
 Landscape Architecture
 Land Planning
 Construction Management

5151 South 900 East, Suite 200
 Salt Lake City, UT 84117
 Ph: 801.269.0355
 Fax: 801.269.1425
 www.thinkpk.com

The designs shown and described herein including all technical drawings, graphic representation & models thereof, are proprietary & can not be copied, duplicated, or commercially exploited in whole or in part without the sole and express written permission from ASWN+ISA Architects, Inc.

These drawings are available for limited review and evaluation by clients, consultants, contractors, government agencies, vendors, and office personnel only in accordance with this notice.

AUTUMN SKY TOWNHOMES

HERRIMAN, UTAH

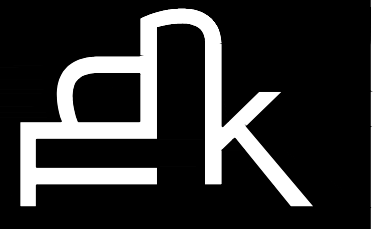
PROJECT NO. 16074
 DATE: DEC 14, 2016

REVISIONS:

SHEET TITLE:
 PRELIMINARY
 PLANTING PLAN

SHEET NUMBER:

LP 101



Think

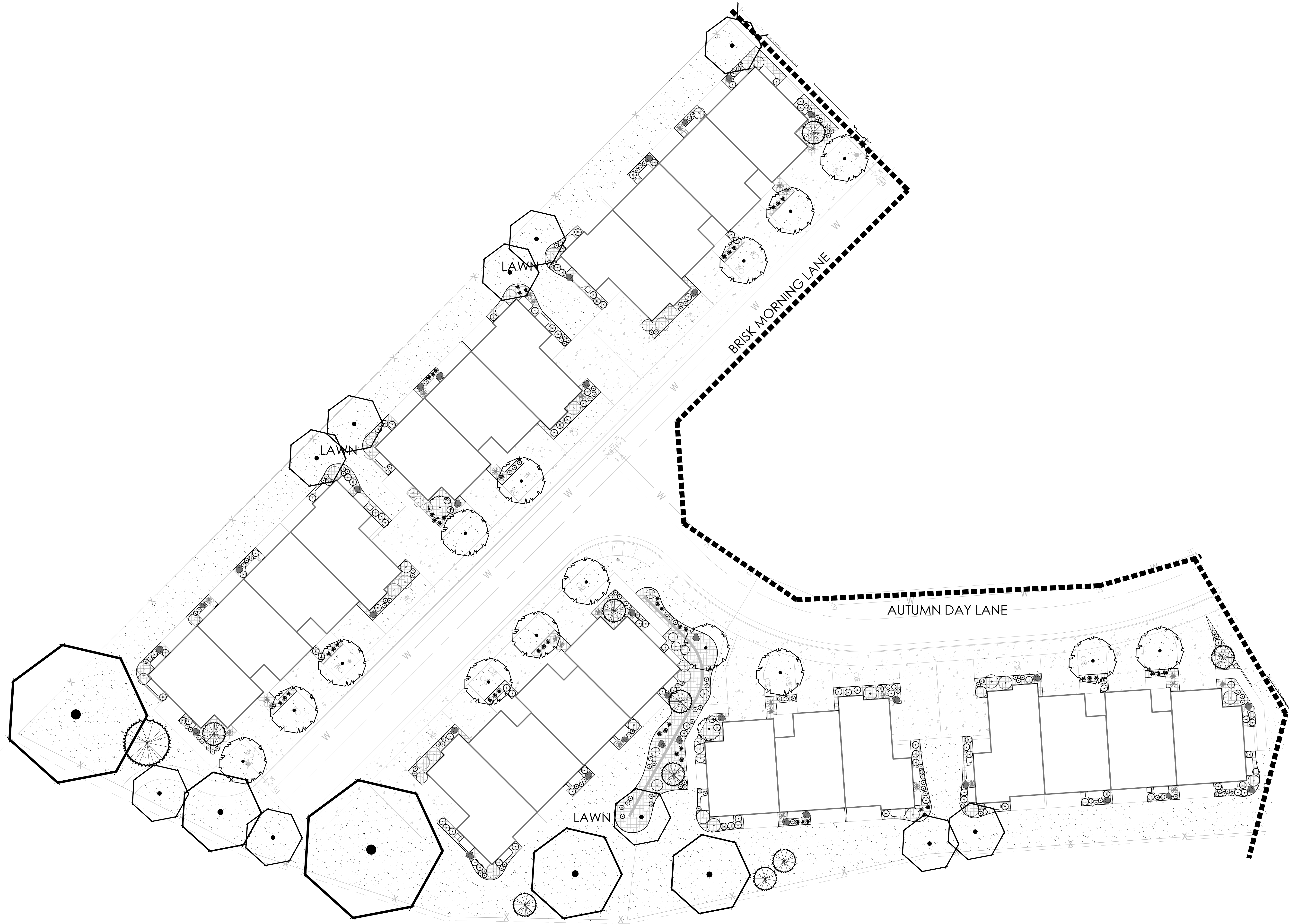
Architecture

Architecture
Interior Design
Landscape Architecture
Land Planning
Construction Management

5151 South 900 East, Suite 200
Salt Lake City, UT 84117
Ph: 801.269.0355
Fax: 801.269.1425
www.thinkarc.com

The designs shown and described herein including all technical drawings, graphic representation & models thereof, are proprietary & can not be copied, duplicated, or commercially exploited in whole or in part without the sole and express written permission from ASWN+ISA Architects, Inc.

These drawings are available for limited review and evaluation by clients, consultants, contractors, government agencies, vendors, and office personnel only in accordance with this notice.



AUTUMN SKY TOWNHOMES

HERRIMAN, UTAH

PROJECT NO. 16074
DATE: DEC 14, 2016
REVISIONS:

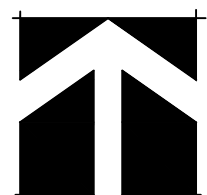
SHEET TITLE:
PRELIMINARY
PLANTING PLAN

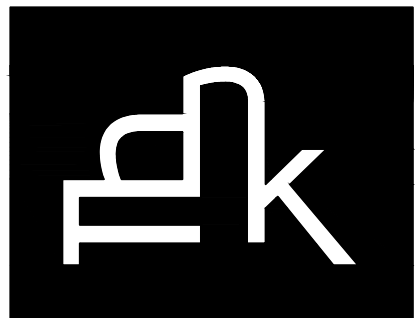
SHEET NUMBER:

LP 102

A PRELIMINARY LANDSCAPE PLAN

SCALE 1" = 20'-0" (24' x 36")
SCALE 1" = 40'-0" (12' x 18")





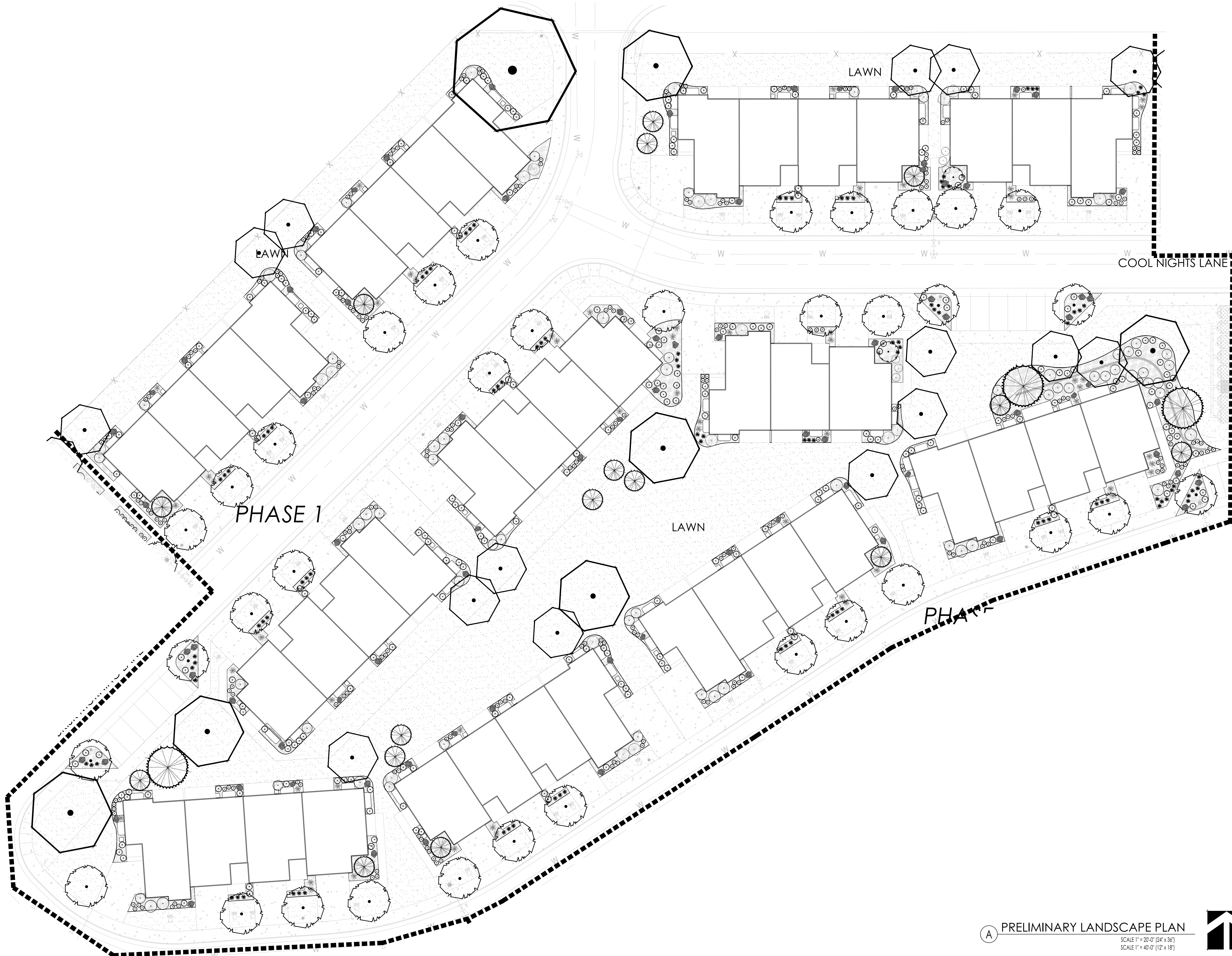
Think
Architecture

Architecture
Interior Design
Landscape Architecture
Land Planning
Construction Management

5151 South 900 East, Suite 200
Salt Lake City, UT 84117
Ph: 801.269.0355
Fax: 801.269.1425
www.thinkpk.com

The designs shown and described herein including all technical drawings, graphic representation & models thereof, are proprietary & can not be copied, duplicated, or commercially exploited in whole or in part without the sole and express written permission from ASWN+ISA Architects, Inc.

These drawings are available for limited review and evaluation by clients, consultants, contractors, government agencies, vendors, and office personnel only in accordance with this notice.



AUTUMN SKY TOWNHOMES

HERRIMAN, UTAH

PROJECT NO. 16074
DATE: DEC 14, 2016
REVISIONS:

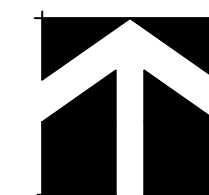
SHEET TITLE:
PRELIMINARY
PLANTING PLAN

SHEET NUMBER:

LP 103

(A) PRELIMINARY LANDSCAPE PLAN

SCALE 1" = 20'-0" (24" x 36")
SCALE 1" = 40'-0" (12" x 18")





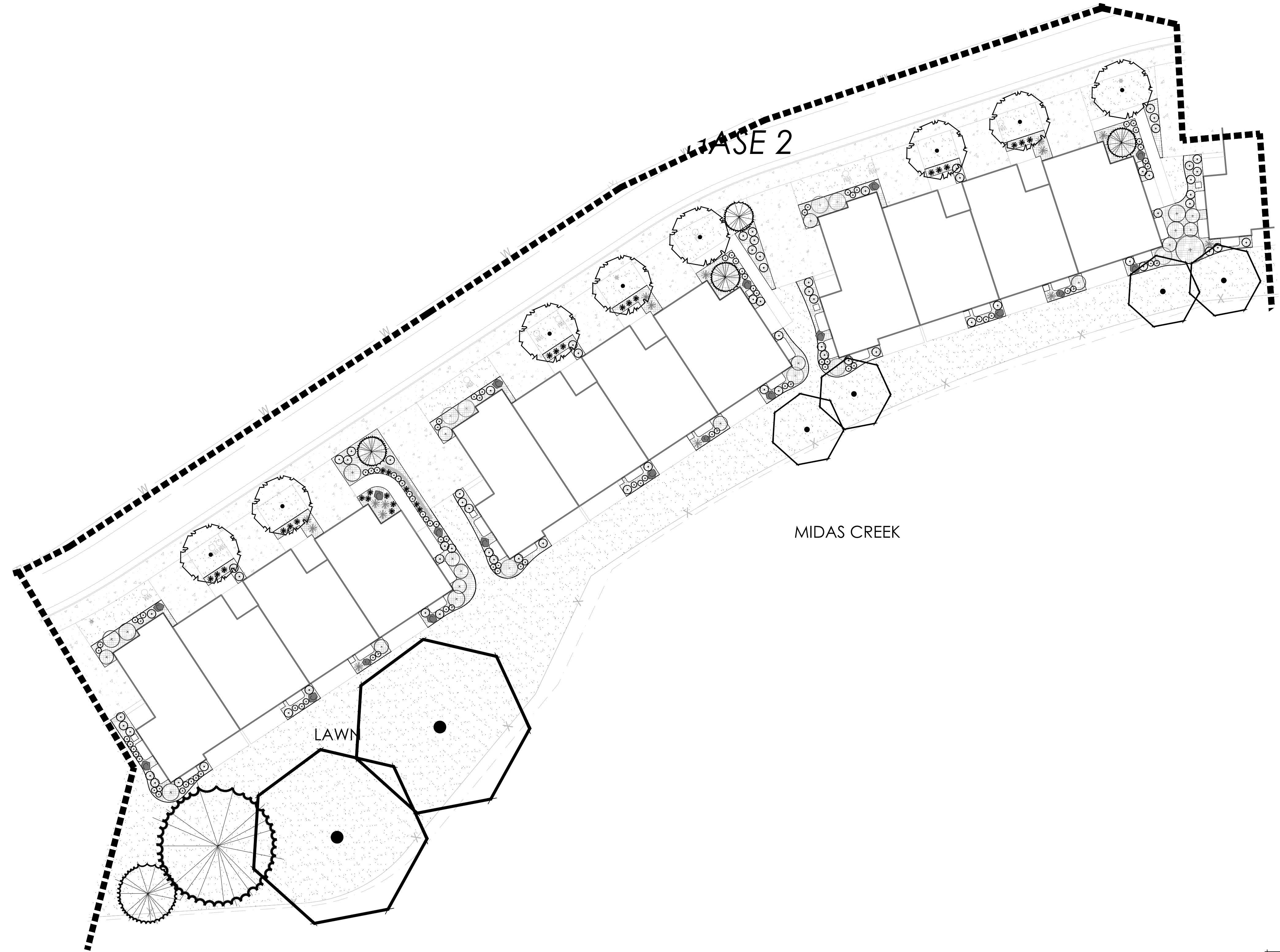
Think

Architecture
Interior Design
Landscape Architecture
Land Planning
Construction Management

5151 South 900 East, Suite 200
Salt Lake City, UT 84117
Ph: 801.269.0355
Fax: 801.269.1425
www.thinkarc.com

The designs shown and described herein including all technical drawings, graphic representation & models thereof, are proprietary & can not be copied, duplicated, or commercially exploited in whole or in part without the sole and express written permission from ASWN+JA Architects, Inc.

These drawings are available for limited review and evaluation by clients, consultants, contractors, government agencies, vendors, and office personnel only in accordance with this notice.



AUTUMN SKY TOWNHOMES

HERRIMAN, UTAH

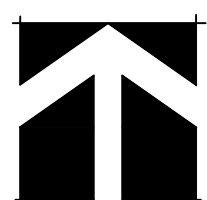
PROJECT NO. 16074
DATE: DEC 14, 2016
REVISIONS:

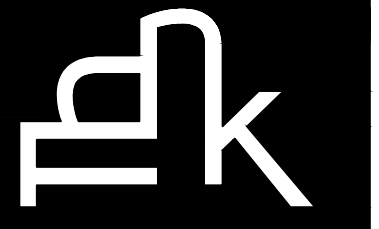
SHEET TITLE:
PRELIMINARY
PLANTING PLAN

SHEET NUMBER:

LP 104

A PRELIMINARY LANDSCAPE PLAN
SCALE 1" = 20'-0" (24' x 36")
SCALE 1" = 40'-0" (12' x 18")





Think

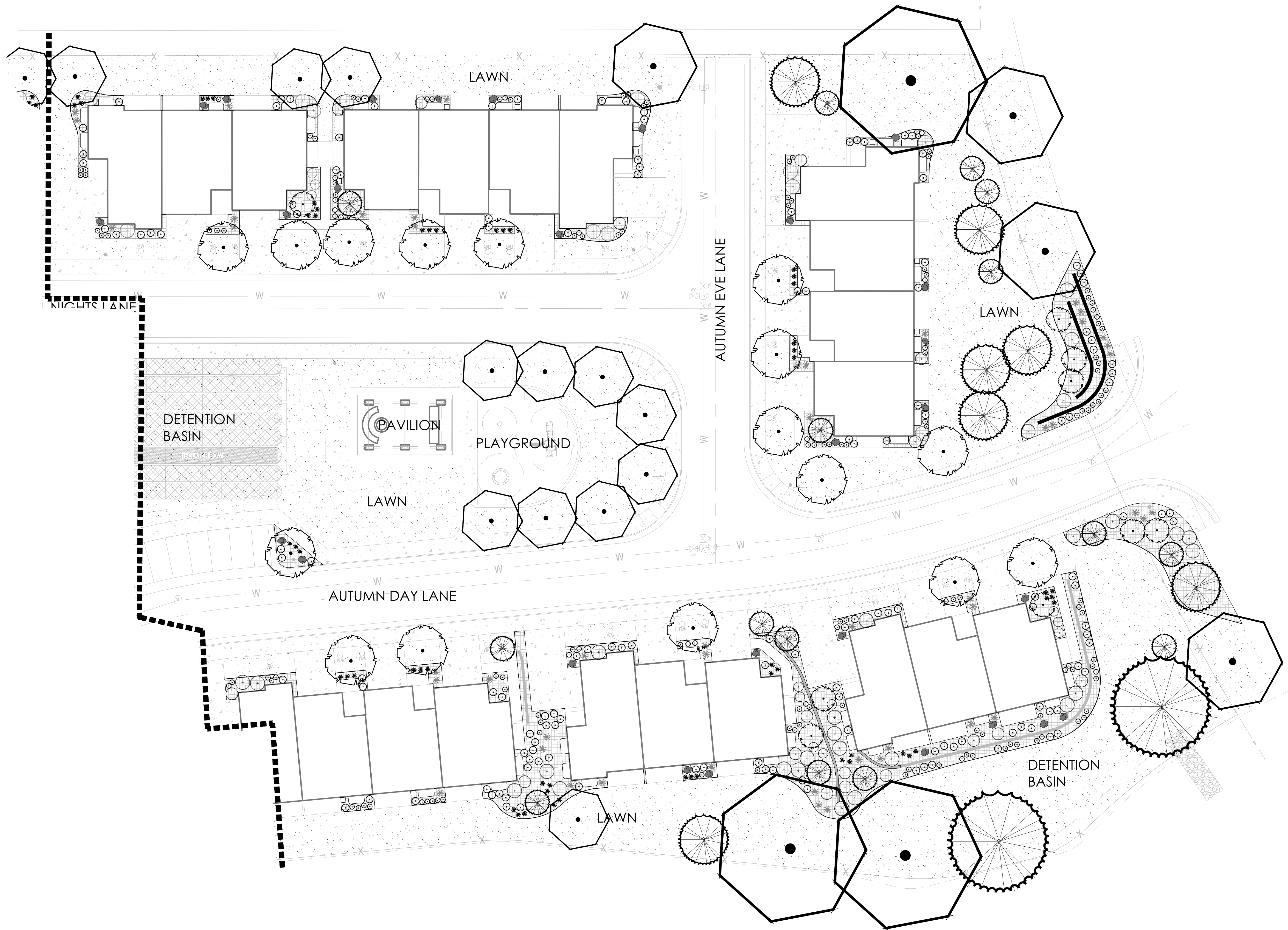
Architecture

Architecture
Interior Design
Landscape Architecture
Land Planning
Construction Management

5151 South 900 East, Suite 200
Salt Lake City, UT 84117
Ph: 801.269.0355
Fax: 801.269.1425
www.thinkaec.com

The designs shown and described herein including all technical drawings, graphic representation & models thereof, are proprietary & can not be copied, duplicated, or commercially exploited in whole or in part without the sole and express written permission from ASWN+ISA Architects, Inc.

These drawings are available for limited review and evaluation by clients, consultants, contractors, government agencies, vendors, and office personnel only in accordance with this notice.



AUTUMN SKY TOWNHOMES

HERRIMAN, UTAH

PROJECT NO. 16074
DATE: DEC 14, 2016
REVISIONS:

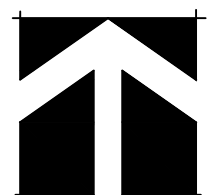
SHEET TITLE:
PRELIMINARY
PLANTING PLAN

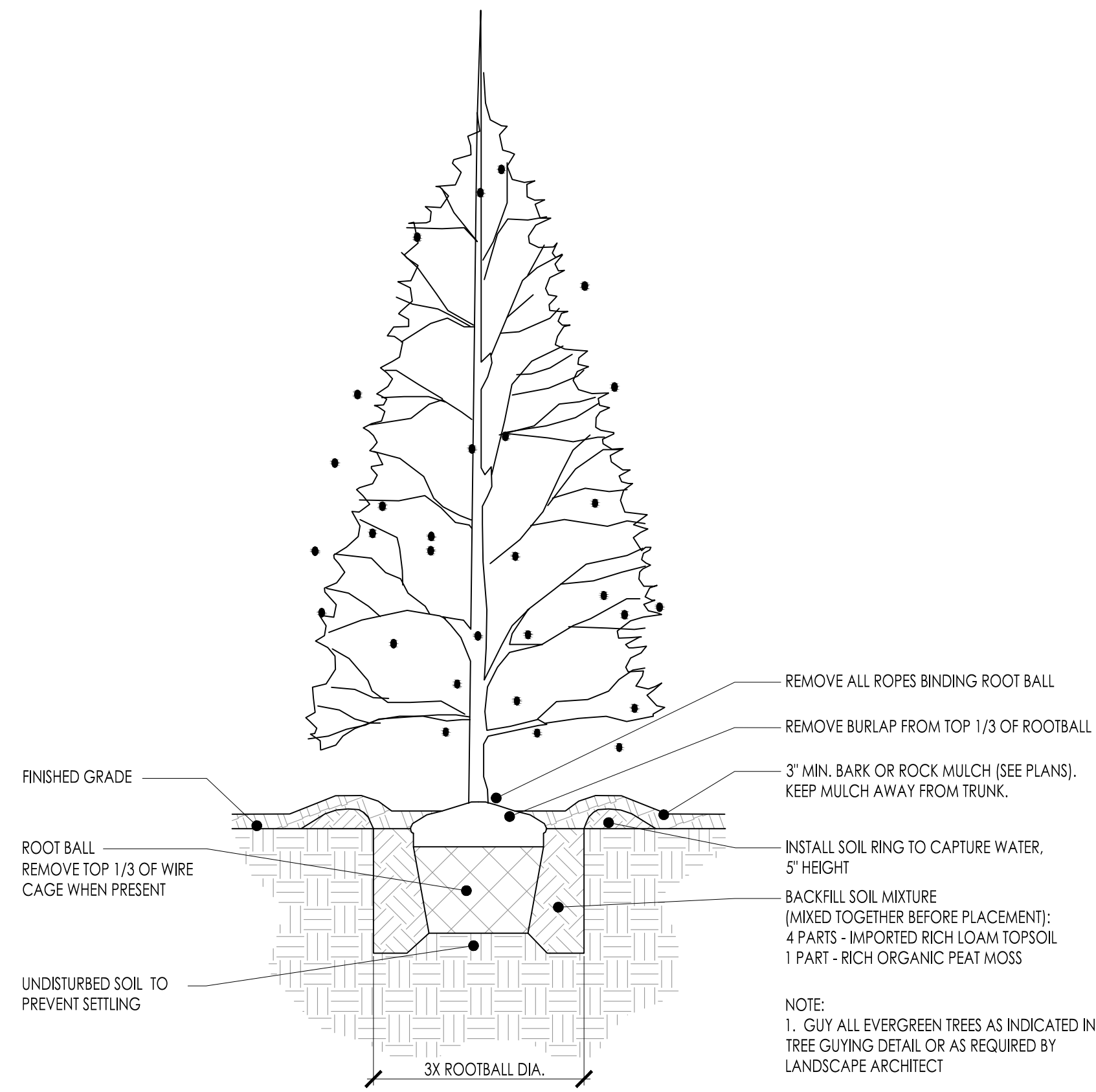
SHEET NUMBER:

LP 105

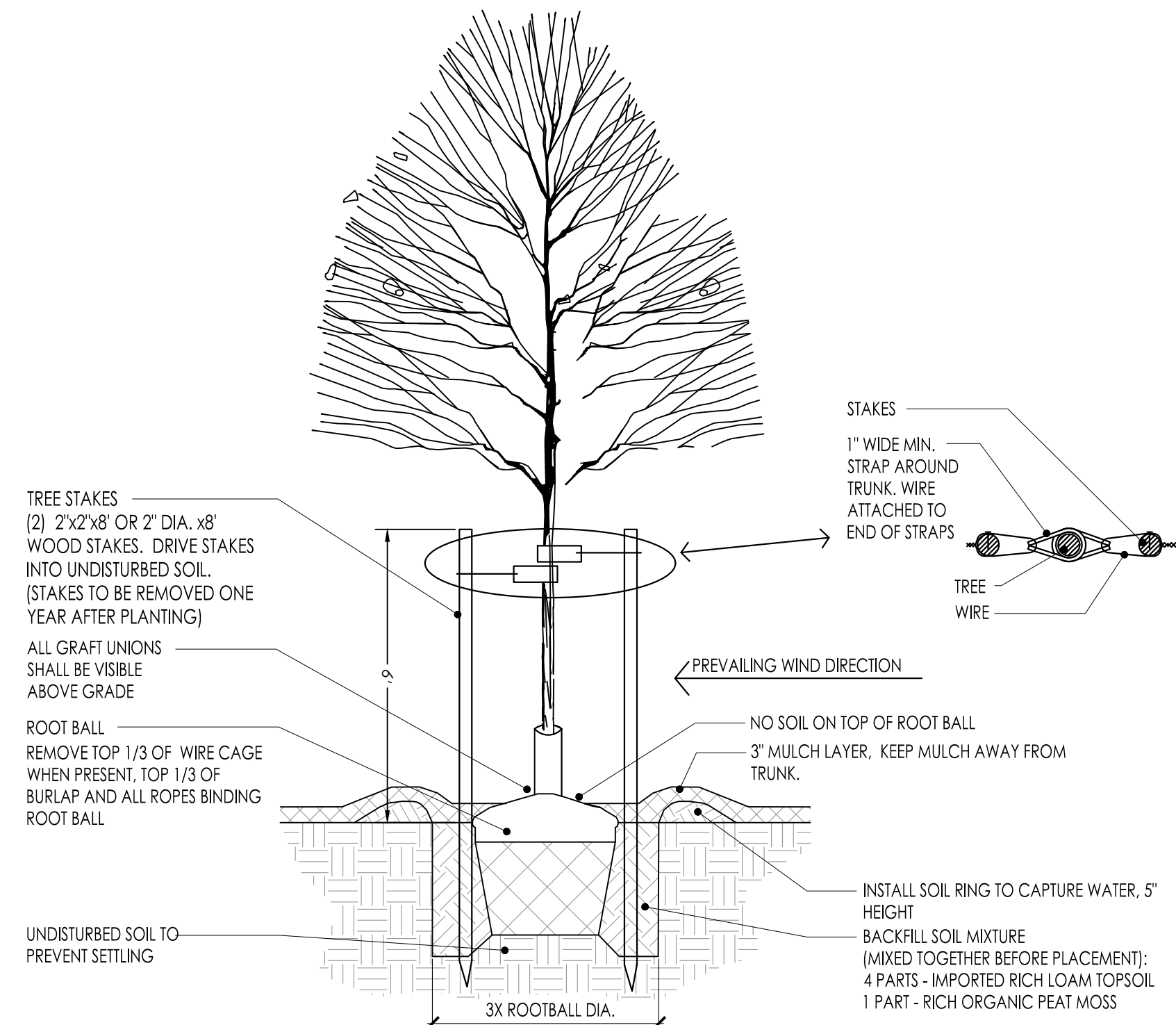
A PRELIMINARY LANDSCAPE PLAN

SCALE 1" = 20'-0" (24' x 36")
SCALE 1" = 40'-0" (12' x 18")

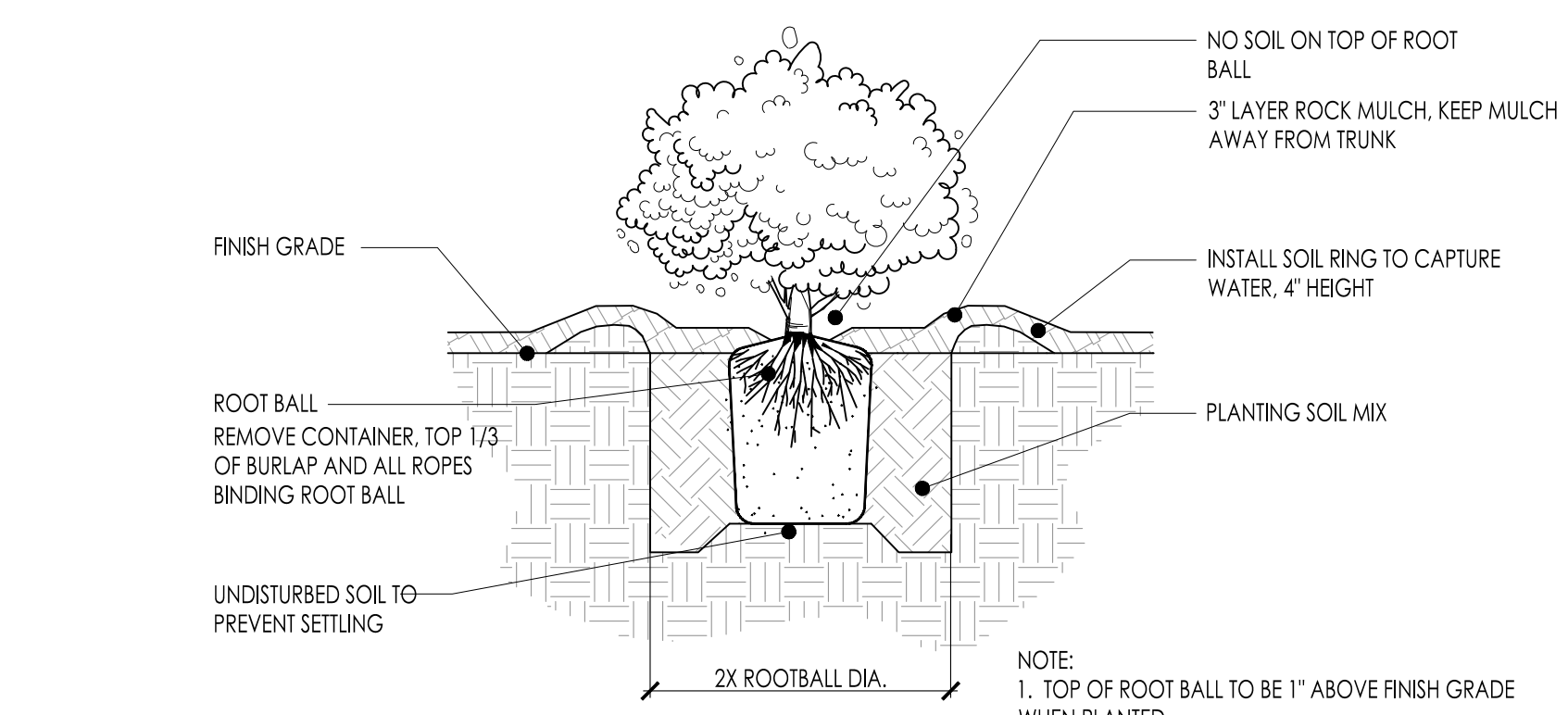




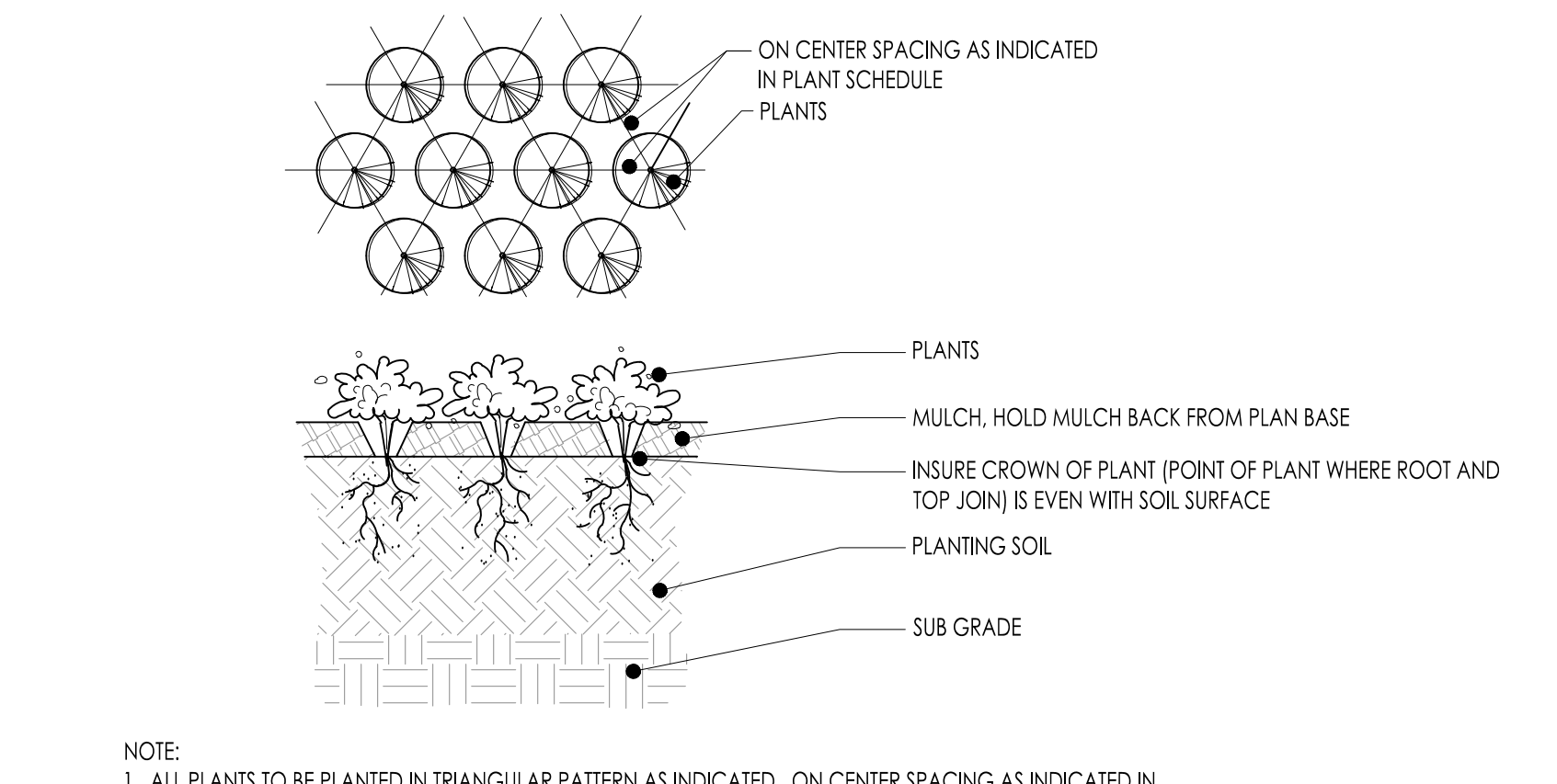
EVERGREEN TREE PLANTING ①



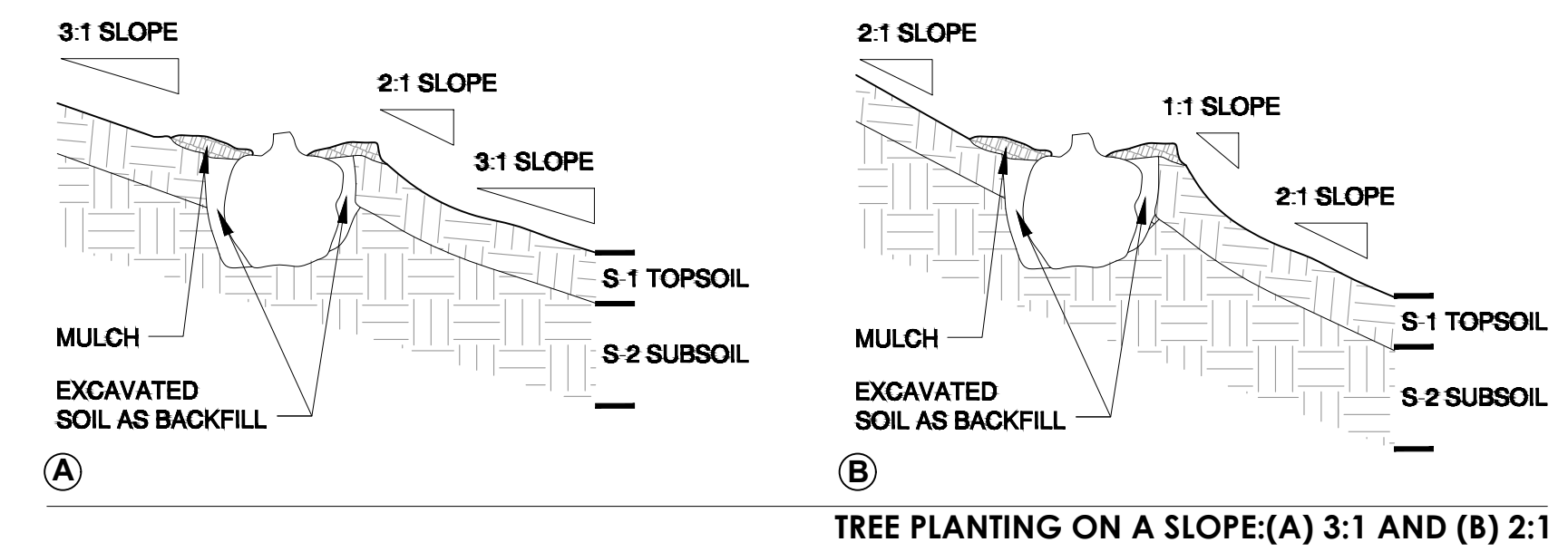
DECIDUOUS TREE PLANTING ②



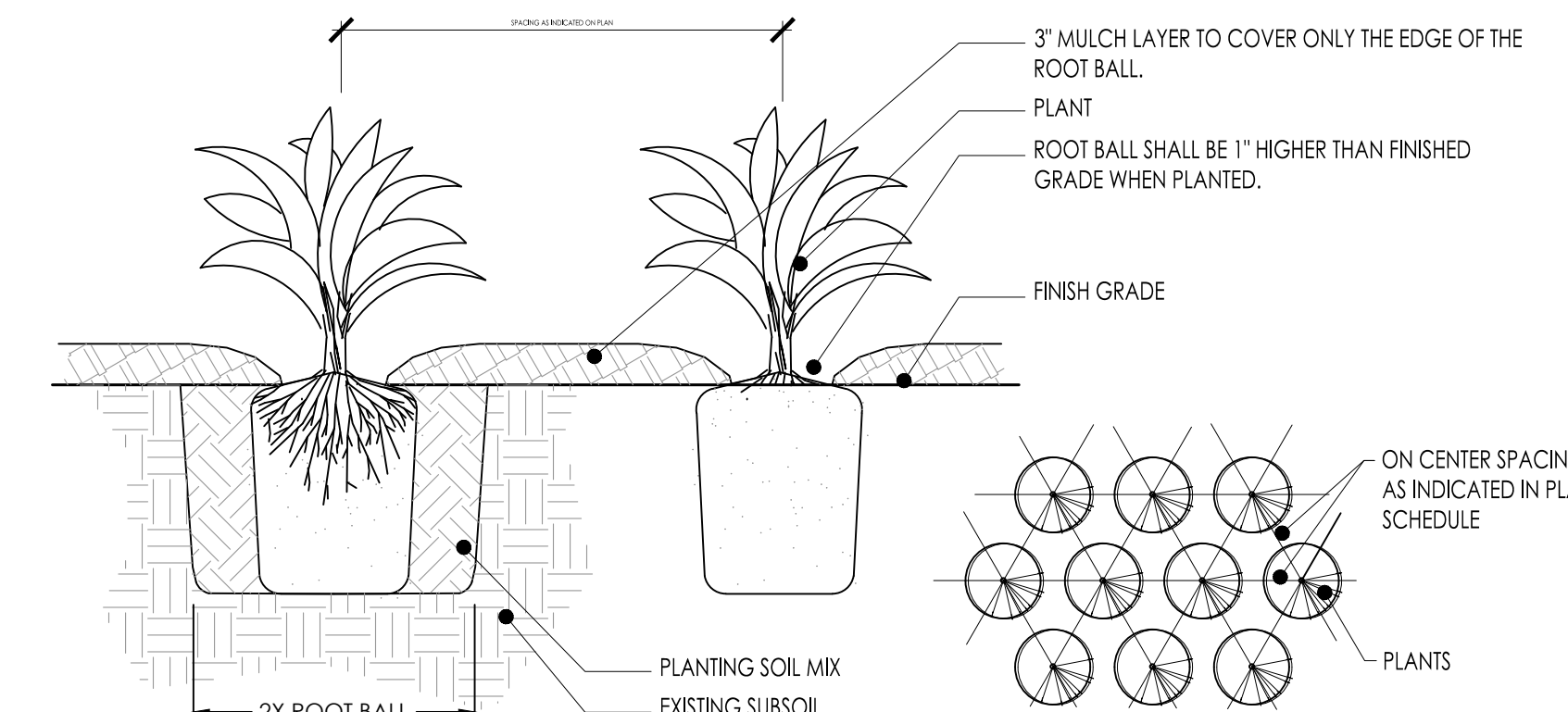
SHRUB PLANTING ③



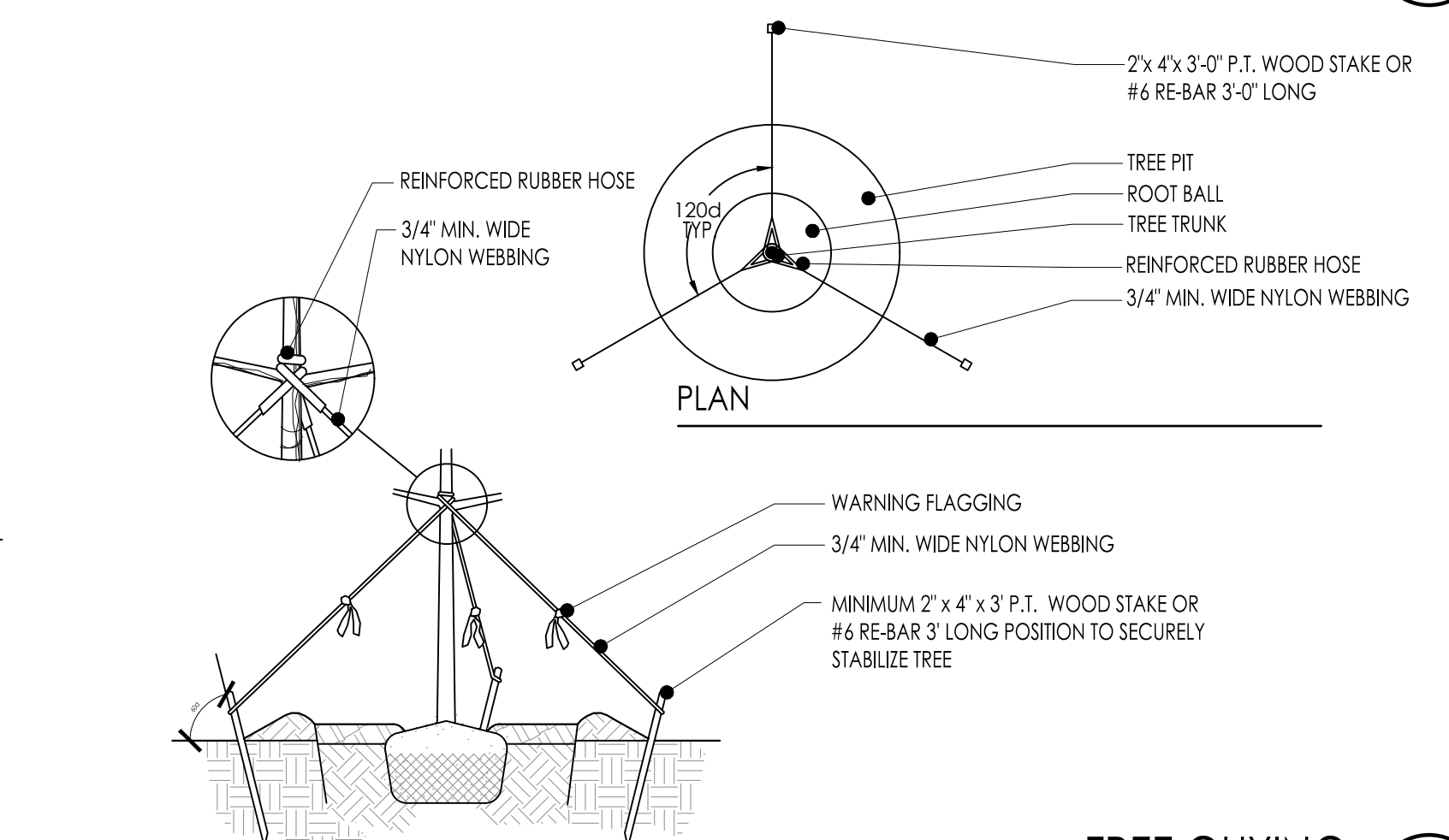
GROUND COVER PLANTING ④



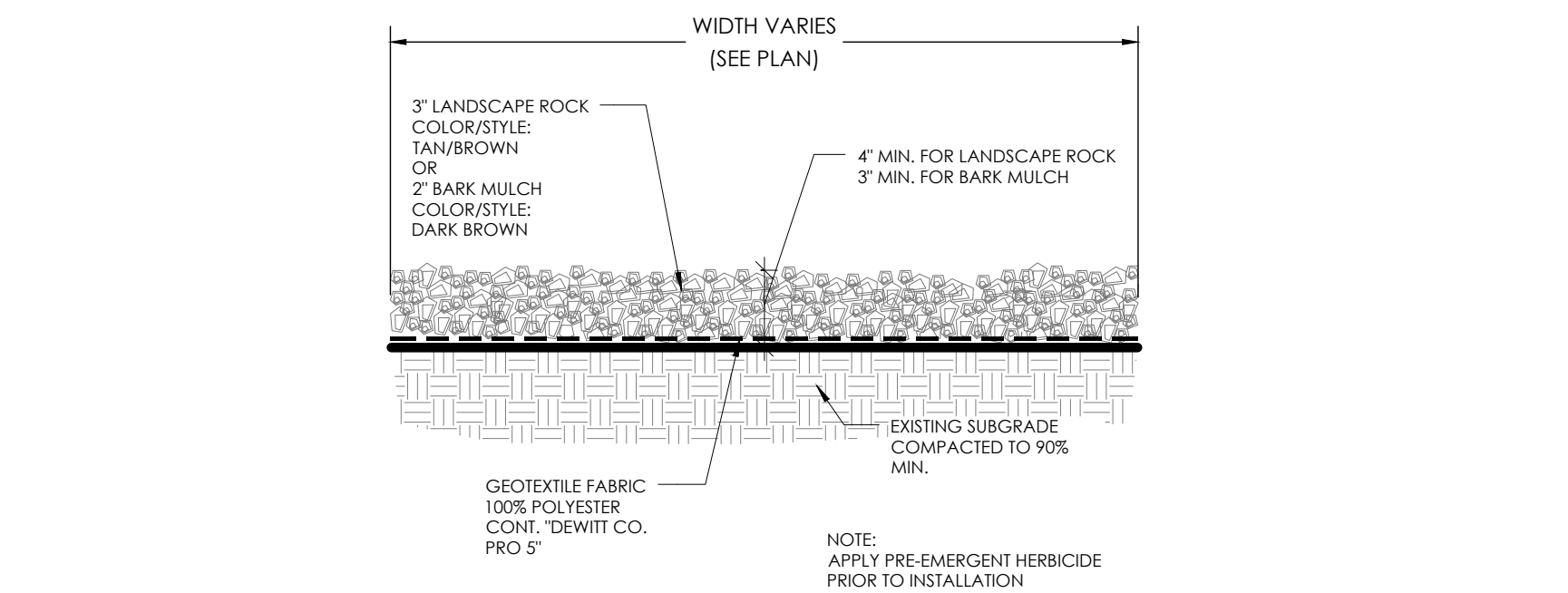
TREE PLANTING ON SLOPE ⑤



PERENNIAL PLANTING ⑥



TREE GUYING ⑦



MULCH - LANDSCAPE COVER ⑧